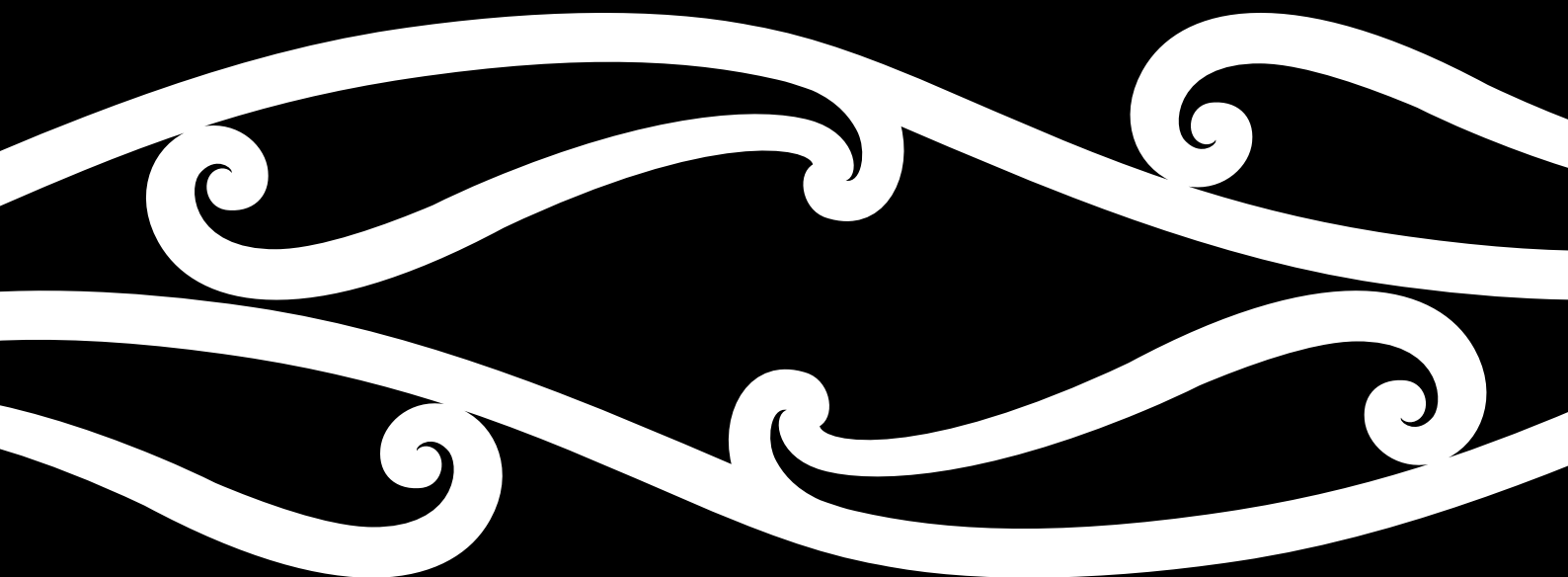


2025

Postgraduate Prospectus

Whakatairanga Tāura





Contents

- 1 Welcome to UC
- 2 Why postgrad?
- 4 Why UC?
- 5 Te Kura Tāura | UC Graduate School
- 6 Research

Study options

- 9 Study pathways
- 10 Conversion qualifications
- 11 Frequently asked questions
- 12 Toi Tangata | Arts
- 17 Umanga | Business
- 22 Ako | Education
- 26 Pūhanga | Engineering
- 32 Kōwaiwai | Fine Arts
- 34 Ngahere | Forestry

- 36 Oranga | Health
- 40 Ture me te Muru Taihara | Law
- 42 Puoro | Music
- 44 Hanga Otinga | Product Design
- 46 Pūtaiao | Science
- 53 Tauwhiro Hapori | Social Work
- 55 Hauora Reo | Speech and Hearing
- 57 Tuihono UC | UC Online

Lifestyle and support

- 60 Accommodation
- 61 Support

Apply and enrol

- 63 Enrolment and scholarships
- 64 Important dates

Rainbow Diversity Support



UC is proud to partner with Ngāi Tūāhuriri and Ngāi Tahu to uphold the mana and aspirations of mana whenua.

Published Oketopa | October 2024. Information is correct at the time of print, but is subject to change.



Welcome to UC



Postgraduate programmes are a pathway for deeper knowledge and study, no matter whether you are a recent graduate, or mid career seeking the next step.

UC has a fantastic array of postgraduate programmes – whether you want to study Antarctic aerosols, aerospace engineering, ‘big data’ science, criminal justice, child development, Māori and Indigenous leadership, or urban sustainability. At higher levels, we have Research Masters and Doctoral programmes, with many large research teams.

Your postgraduate study will be backed by passionate academics and supervisors, world-class research facilities and teaching spaces, knowing that your degree is gained at a university recognised on the world stage as evidenced by our top 300 global QS ranking, and top 90 Times Higher Education Impact ranking.

Finally, you will find many professional development courses at UC that will help achieve your first, or next, career aspiration. I encourage you to think about enrolling for postgraduate study at UC, and join our institutional journey of making a difference in Aotearoa New Zealand and the world.

Ngā mihi,

Professor Peter Gostomski

Tumu Tuarua Rangahau | Acting Deputy Vice-Chancellor (Research)



As Amo Rangahau | Dean of Postgraduate Research at the University of Canterbury, I look forward to supporting you in your research journey. Postgraduate research allows you to push the very boundaries of thought and develop knowledge with insight and impact. My role is to ensure you are supported and empowered along this journey so that you achieve your goals and aspirations.

UC’s values of Whanaungatanga, Tiakitanga, and Manaakitanga underpin our work with postgraduate research students. We welcome a plurality of students whose diverse backgrounds strengthen UC and bring us closer. We encourage research that contributes positively to our community (local and international) and environment. We will strive to support you, and our colleagues who mentor you during your research journey, in a way that values your strengths and empowers you in your research journey. Whatever your chosen field, your research is shaping our future. We would be delighted if you chose UC as the place where you embark upon the next phase of that journey.

Professor Megan McAuliffe

Amo Rangahau | Dean of Postgraduate Research



Nāia te mihi ki a koutou katoa!

Warm greetings to you all!

It is through education and ongoing study that you can make a difference for yourself, for others in your community, and the world. Through postgraduate study at the University of Canterbury, you will have the opportunity to make a positive impact, challenge existing knowledge, and help create new understandings. When you are part of Te Kura Tāura, our Graduate School, you will be part of a whānau. You will be supported, accepted for who you are and what you bring, and nurtured throughout your time with us.

Nau mai, haere mai!

Liz Brown

Amokapua Pākāmano Tuarua | Deputy Assistant Vice Chancellor Māori



120+

*qualifications in subjects ranging
from Antarctic Studies to Writing*

Why postgrad?

Curious about a specialist topic? Want to develop professionally, or change direction?

Whatever your goals, UC offers over 120 graduate and postgraduate qualifications along with the support to achieve them.

Advantages of further study

Graduate and postgraduate study can provide you with:

- specialist skills and applied experience
- enhanced knowledge
- entry into specialised occupations
- critical thinking, evaluation, and communication skills
- the opportunity to conduct original research
- smaller classes and closer links with staff
- higher salaries — research shows that study at postgraduate level (master's and PhD) could give you a salary advantage.

Varied study options

UC offers a range of higher qualifications in many subjects — from Accounting to Writing:

- honours degree
- graduate certificate or diploma
- postgraduate certificate or diploma
- coursework-based ("taught") master's degree
- research master's degree
- conversion degrees
- doctoral programmes.

Learn more about these qualifications on **pages 9–10**.

Flexible learning

To help you balance study with lifestyle and other commitments, UC supports flexible learning. Depending on the qualification, you could do block courses, online learning, or study part-time.



“Some of the useful skills I learnt at UC to analyse the big picture, I continue to use and fine-tune today. I like how the methods and techniques taught in the postgrad courses are transferable to the professional world.”

Stefan

Professional Master of Engineering Geology



Join a connected community

Resources and facilities

- World-class facilities
- Library research resources and advice
- Some research students have access to dedicated office space and resources (contact the relevant department for details)
- Tutoring and research work opportunities
- Free public lectures (UC Connect).

Industry connections

- Interaction with staff members increases at postgraduate level
- Applied learning experiences are available in the field, community, and businesses
- Research centres, institutions, and hubs open up opportunities.

Support systems

UC has a wealth of support services you can use:

- orientation events
- the Postgraduate Students' Association
- on-campus childcare facilities
- supportive lecturers and supervisors
- academic and advisory services

See **page 61** for more information.

Alumni network

Each year 1,000+ postgraduate students complete their higher qualification at UC, joining the alumni network of over 141,000 graduates around the world. When you graduate, you automatically join the UC alumni community and can stay in touch with friends, colleagues, and know what's new at the University.



MORE

1.9 million research items in UC's three libraries

17% of students at UC are postgraduates

100 thousand resources in UC's Māori heritage collection

658 research degrees were completed from January 2023–August 2024



Why UC?

We like to say tangata tū, tangata orā — we want our community to be willing and prepared to make a difference — and this passion drives our University.

Art gallery to augmented reality

At UC, you have access to world-class facilities. Some examples include:

- the Rutherford Regional Science and Innovation Centre with specialist laboratories
- the Makerspace for creating products
- the largest structural engineering lab in Aotearoa New Zealand
- an augmented reality lab
- an art gallery
- a nanofabrication laboratory
- MARS scanner, the world's first high-res colour 3D x-ray
- a financial trading room
- speech and language clinics
- a moot court room
- a sports science centre
- the largest Greek and Roman antiquities collection in the Southern Hemisphere.

International achievements

QS Subject Rankings 2024

- UC is in the top 100 in the world in Civil and Structural Engineering, Geography, and Linguistics.
- UC is in the top 200 in the world in Earth and Marine Sciences, Forestry, Geology, Geophysics, and Politics.

Times Higher Education Rankings 2024

- UC is in the top 90 universities in the world (Impact Rankings)
- UC is in the top 200 in the world in Business and Economics.



Times Higher Education
Impact Rankings
2024 TOP 90

Global accreditations

- UC's MBA is accredited by AMBA, the global standard for MBAs.
- UC Business School is also accredited by AACSB and EQUIS; only 1% of business schools in the world have attained all three accreditations.
- Engineering programmes are accredited by Engineering New Zealand, which is a signatory to the Washington Accord.



Compact and green campus

UC has a central campus set in park-like surroundings. You can enjoy many amenities, all within minutes of each other, including cafés, eateries, and bars. There is also a health centre, pharmacy, gym and recreation facilities, bookstore, postal services, and ATMs on campus.



140

Doctoral completions in 2023

Te Kura Tāura UC Graduate School

We are here to support research students, providing pastoral care, advice, and guidance throughout your academic journey.

Te Kura Tāura | UC Graduate School is a one-stop shop for research master's and doctoral information and student support needs.

We also seek to deliver research experiences through seminars and workshops that prepare students for academic and professional post-study careers and opportunities. We draw on best practices from around Aotearoa New Zealand and internationally to achieve this.

Researcher development

We have worked closely with experts across the University to create a framework that students can use to navigate their research journey. The Researcher Development Framework consists of training and development opportunities tailored to each stage of a student's candidature.



Furthermore, we are the first point of contact for research students, supervisors and other support staff. Two dedicated Kaitoko | Research Student Advisors facilitate your transition into UC and offer regular one-on-one support.

Graduate research is exciting, but also challenging. We have established processes and practices for student wellbeing.

Te Kura Tāura | UC Graduate School



“The environment at UC is very supportive. I’ve got such good relationships with everyone from the department lecturers and advisors through to the admin staff, I wanted to finish my linguistics study journey here.”

Sidney

Master of Linguistics, Master of Applied Data Science, PhD in Linguistics



\$302m

\$302 million in active research contracts at UC

Rangahau | Research

UC is an important research university in Australasia, and our academic staff regularly collaborate with many researchers, business, and community groups.

Accessible experts

Explore the range of our research areas, current researchers and their projects, partnerships, and groundbreaking findings at: canterbury.ac.nz/research

The UC Research Repository is an open-access database of original research by Waitaha Canterbury academics, researchers, and postgraduate students. ir.canterbury.ac.nz

Research-informed teaching

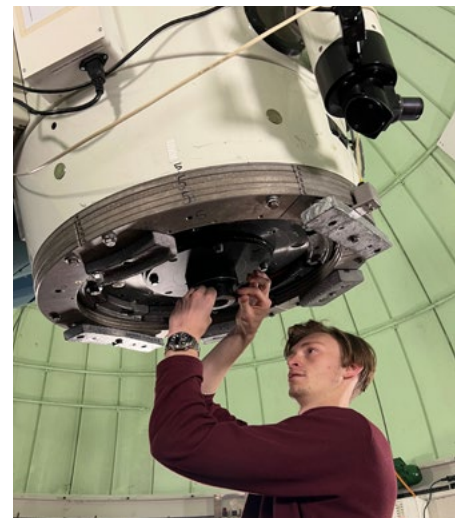
Our programmes are research-led, with academic staff who actively research and publish in their specialist areas. Teaching and supervision up to PhD level is available in most subjects.

Our lecturers and researchers regularly receive international and national awards for their work. International experts work with and teach our postgraduate students. We also host international senior academics from top universities to lecture at UC through our Erskine Programme.

Exceptional resources

UC Library is accessible online 24/7, and has a research collection of over 1.9 million items, more than 45,000 periodicals, and specialist collections. Specialist subject librarians provide support across all disciplines.

UC also has specialist libraries such as the Engineering and Physical Sciences Library (EPS), and the Macmillan Brown Library for Aotearoa and Pacific Islands material.



“I chose to study here for the opportunities and connections that UC provides. More and more lecturers and researchers are taking astronomy here every year. I also get access to the Mt John facilities.”

Zachary

PhD in Astronomy



Leading research centres

UC is home to 40 research centres, institutes, and hubs. The centres attract high-calibre academic staff and offer exciting research and work opportunities at postgraduate level. Here are a few examples:

- Quake CoRE: New Zealand Centre for Earthquake Resilience
- Biomolecular Interaction Centre
- New Zealand Institute of Language, Brain and Behaviour (NZILBB)
- Geospatial Research Institute
- Electric Power Engineering Centre (EPECentre)
- Gateway Antarctica
- Centre for Bioengineering
- GeoHealth Laboratory
- Human Interface Technology Laboratory of New Zealand (HIT Lab NZ)
- New Zealand Centre for Human-Animal Studies
- Rose Centre for Stroke Recovery and Research
- The Waterways Centre

Learn more about research at UC:



'Love food, hate waste' advocate wins research award

Dr Kemper, a marketing academic at UC, has won an Early and Emerging Career Researcher Award for promoting sustainable and healthy eating in the era of climate change. Her research explores topics such as meat reduction, alternative proteins, food waste, sustainable packaging, climate change anxiety and obesity.

"My focus is on moving towards a circular economy that's inclusive and equitable. We don't have time for incremental change, we need radical change as we are in a climate emergency."

profiles.canterbury.ac.nz/Joya-Kemper



PhD students create a tool to help prevent the third leading cause of death in New Zealand

Breath-to-Breath Observed Biometrics, or BOB, is being developed by UC PhD students Ella, Jaimey, and Trudy after they found that respiratory data is locked inside medical devices and inaccessible by everyone, including patients.

"Our specialised software interprets and sends results to your GP, providing data-driven care that isn't currently possible with appointments every one to three months. Current testing for respiratory illnesses can take a long time and be costly. Specialised clinics which do not have the capacity to be accessed by everyone."

BOB provides real-time, high quality, breath-to-breath data, for the patient and their clinician to use.

Study options



Study pathways

Honours degrees

An honours degree allows you to delve deeper into a **subject from your undergraduate degree**. It involves a personalised study programme and is usually one year of full-time coursework and some research.

Some degrees have an honours year built into it such as the Bachelor of Engineering (Honours) or the Bachelor of Social Work (Honours) as these are designed for specific career outcomes.

Honours degrees are like a taster to further study, and could lead into a master's degree or doctoral studies.

Graduate certificates and diplomas

Most graduate qualifications can be taken by students with a bachelor's degree in a **different subject area**. They allow you to change subject focus — either in your first degree, or a completely different area. Graduate studies typically involve taking advanced undergraduate courses. This can enhance the value of your undergraduate degree, be a first step to a new career, or further your study.

Some graduate qualifications, like the Graduate Diploma in Teaching and Learning, are professional qualifications that prepare you for a specific career.

Postgraduate certificates and diplomas

Postgraduate certificates and diplomas develop higher level understanding and specialist skills, normally in the **same subject area** as your first degree. They can be a specialised professional development opportunity or the next step towards a higher level of study. As well as offering structured courses, many allow you to undertake an independent project or research.

Research master's

A research master's degree advances your knowledge and enables you to conduct a significant piece of independent research (with supervision) in the form of a 90+ point thesis.

Coursework (taught) master's

A taught master's degree provides a structured programme of courses at an advanced level. There will be many applied learning opportunities such as an independent project or industry placement as part of the degree.

A number of UC's master's programmes allow for a combination of both coursework and research.

A basic depiction of graduate and postgraduate pathways



Note: We also have part-time study options available, which will take longer to complete. Some degrees may accept enrolments based on relevant work experience and do not require previous university study. For study planning advice, please contact a Student Advisor.

Conversion master's

In some cases, you can study a **different subject** from that of your prior degree, opening up new learning experiences and career pathways. For example, the Master of Business is a conversion master's designed to accommodate students from any undergraduate background, not just a Bachelor of Commerce.

See **page 10** for a list of conversation qualifications available at UC.

Professional development options

We have many options for professional development and keeping up-to-date in the industry you work in.

Some offerings include:

- Teaching professional development — see **pages 22–25**.
- Engineering professional development — see **page 27**.
- Tuihono UC | UC Online — short courses, microcredentials, master's degrees can be studied online while you work. Learn more on **pages 57–58**.
- Postgraduate certificates and diplomas to learn new skills — see **pages 12–58** for a full list of options available at UC.

Doctoral studies

A doctoral degree is our highest academic degree. Those who earn it must demonstrate significant intellectual achievement, high scholarly ability, and great breadth of knowledge. Doctoral degrees involve advanced research in your chosen subject, culminating in a 90+ point thesis.

UC offers two types of doctoral programmes:

- Doctor of Philosophy (PhD)
- Professional Doctoral degrees: Doctor of Musical Arts (DMA; see **page 43**), Doctor of Education (EdD; see **page 25**), and Doctor of Health Sciences (DHSc; see **page 39**).

The minimum period of enrolment for a full-time PhD student is three years; most will take between three to four years.

Applying for a PhD

Students who wish to do a PhD need a research-focused honours or master's degree at first-class or second-class division 1 level (or equivalent qualifications). Intending PhD students must contact and have agreement from a potential supervisor before applying.

See current research projects and available supervisors:



Applications will not be approved until an online interview has taken place.

For more information about the study pathways at UC:



Conversion qualifications

If you are looking to study something new or move into a different career, we have many qualifications for that.

Conversion qualifications allow you to move from one subject area into another and learn a new set of skills. They can open up new experiences and career pathways.

There are two types of conversion qualifications:

- open entry; anyone with a bachelor's degree in any subject can apply (master's degrees require a B or B+ average at 300-level)
- some entry requirements such as completing relevant courses or having practical or professional experience before applying.

Conversion qualifications with open entry

Graduate certificates

- Graduate Certificate in Sport Coaching

Graduate diplomas

- Graduate Diploma in Arts
- Graduate Diploma in Commerce
- Graduate Diploma in Criminal Justice
- Graduate Diploma in Journalism
- Graduate Diploma in Psychological Science
- Graduate Diploma in Science
- Graduate Diploma in Strategic Communication
- Graduate Diploma in Teaching and Learning (Early Childhood, or Primary)

Postgraduate certificates

- Postgraduate Certificate in Antarctic Studies
- Postgraduate Certificate in Business
- Postgraduate Certificate in Product Innovation
- Postgraduate Certificate in Youth and Community Leadership

Postgraduate diplomas

- Postgraduate Diploma in Business
- Postgraduate Diploma in Business Information Systems



- Postgraduate Diploma in Teaching and Learning (Primary)
- Postgraduate Diploma in Youth and Community Leadership

Master's degrees

- Master of Audiology
- Master of Business (in Marketing, Management, Financial Management, or Supply Chain Management)
- Master of Business Information Systems
- Master of International Relations and Diplomacy
- Master of Policy and Governance
- Master of Product Innovation
- Master of Professional Accounting
- Master of Social Work (Applied)
- Master of Speech and Language Pathology
- Master of Strategic Communication
- Master of Teaching and Learning (Primary)
- Master of Teaching English to Speakers of Other Languages
- Master of Writing

Conversion qualifications with some entry requirements

Postgraduate certificates

- Postgraduate Certificate in Digital Humanities
- Postgraduate Certificate in Sport Science

Postgraduate diplomas

- Postgraduate Diploma in Applied Data Science
- Postgraduate Diploma in Business Administration
- Postgraduate Diploma in Sport Science
- Postgraduate Diploma in Teaching and Learning (Secondary)

Master's degrees

- Master of Applied Data Science
- Master of Business Administration
- Master of Financial Engineering
- Master of Health Sciences (Nursing)
- Master of Teaching and Learning (Secondary)

To see entry requirements for each of these qualifications, go to **pages 12-58**, or check our website **[canterbury.ac.nz](https://www.canterbury.ac.nz)**.

Frequently asked questions



What are the entry requirements for postgraduate studies?

Most have a minimum requirement of a bachelor's degree or equivalent, and depending on the qualification, this may need to be in a specific subject or include specific courses.

Generally, graduate certificates and diplomas do not have a GPA requirement, however, most master's degrees require a minimum GPA in your undergraduate degree.

Go to **pages 12–58** for a full list of qualifications with their respective entry requirements, or check the website.

How long will my study take?

Qualifications vary in length — graduate and postgraduate certificates can be completed in six months of full-time study; a full-time master's will take at least a year; and a PhD is typically completed in three to four years of full-time study.

Do you offer flexible options?

Part-time study

Many qualifications can be studied part-time, but this may require approval — the criteria considered include employment, immigration status, health, and family circumstances.

Study online

With a range of master's degrees, micro-credentials, and postgraduate certificates and diplomas, Tuihono UC | UC Online is specifically designed for online learners. Learn more on **pages 57–58** or at uconline.ac.nz.

Study by distance

Distance learning is a hybrid option where classes are mostly done online with some block sessions on campus. This is offered in programmes such as the MBA and some teaching programmes. Course material is provided online and students attend lectures through an interactive learning platform.

Can I study just one course?

You may enrol in a single course. However, entry is based on the idea that you are enrolling without intending to credit it to a degree. Upon completion and with approval, you can gain a Certificate of Proficiency for that course.

UC offers short courses for professionals — see **page 22** for teaching courses, **page 27** for engineering, and **pages 57–58** for Tuihono UC UC Online courses.

What if I don't meet the entry requirements?

If your bachelor's degree does not meet the entry requirements for your chosen postgraduate qualification, you may want to look at doing a Graduate Diploma first. These are at the same level as a bachelor's degree.

For example, if you would like to do further study in psychology, you could do a Graduate Diploma in Psychological Sciences in 1 year of full-time study which would allow you to progress into other postgraduate qualifications in this area without having to complete another bachelor's degree.

If your GPA does not meet the requirements, you may be able to do one or two individual courses to bring up your GPA.

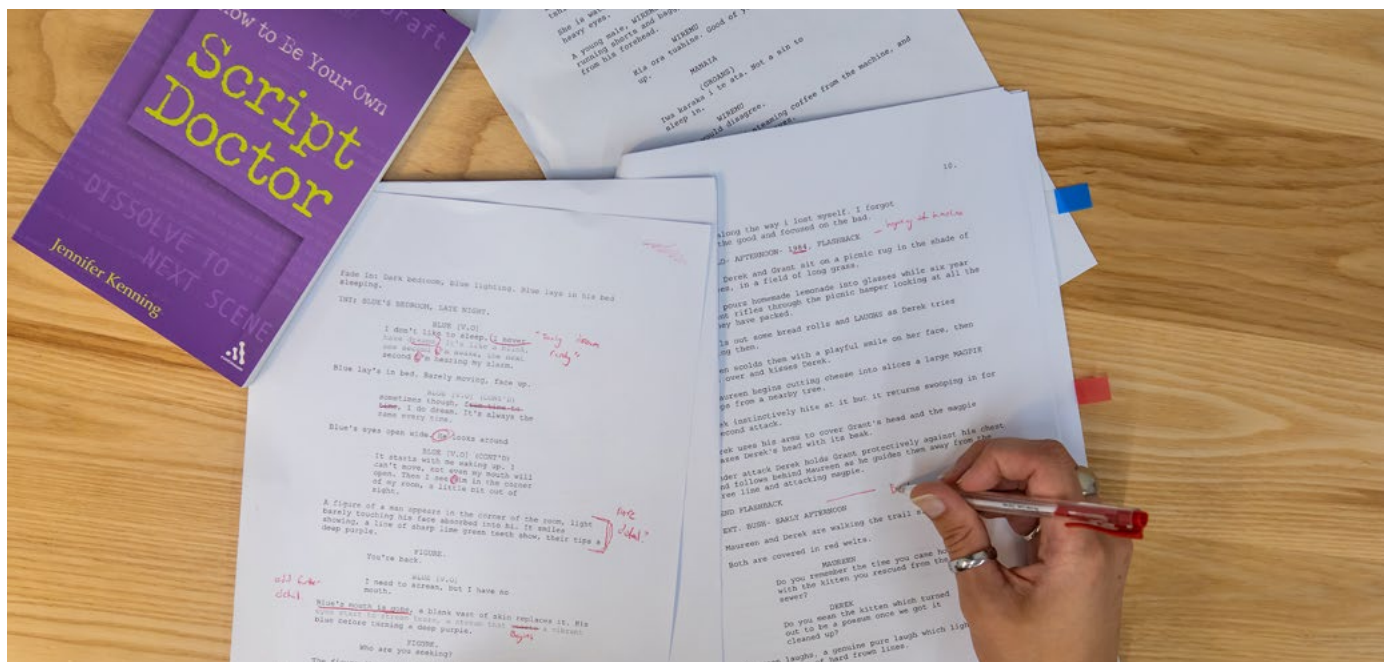
In some cases, professional experience can be taken into account on a case by case basis in place of tertiary study.

Unsure or need advice?

Email futurestudents@canterbury.ac.nz to get in touch with a Student Advisor.



Toi Tangata | Arts



UC Arts has research-driven teaching, and study options in over 40 subjects.

Postgraduate students benefit from many resources including:

- the James Logie Memorial Collection – the Southern Hemisphere's foremost collection of Greek and Roman antiquities
- Te Puna Rakahau o Macmillan Brown Macmillan Brown Library – a collection of Aotearoa and Pacific Islands materials
- internationally renowned research centres
- the American and Canadian fiche collection
- the UC Art Collection
- audio-visual equipment, field stations, and language teaching laboratories.

UC is ranked among the world's top 100 in Linguistics; top 200 in Political Science; and top 250 for Psychology (QS World University Rankings by Subject, 2024).

There are internship opportunities for postgraduate students through our Professional and Community Engagement Internship course, PACE495.

Research

Research is integral to our teaching and academics are engaged in fundamental and applied research across a broad range of subjects at regional, national, and international levels.

UC Arts hosts a number of successful research centres such as:

Te Kāhui Roro Reo | New Zealand Institute of Language, Brain and Behaviour (NZILBB)

Dedicated to the study of human language, this multidisciplinary centre covers linguistics, speech production and perception, language acquisition and disorders, memory, brain imaging, and bilingual education.

UC CEISMIC Canterbury Earthquake Digital Archive

Following the earthquakes of 2010/11, the UC CEISMIC Digital Archive has been collecting and preserving the memories and experiences of the people of the Waitaha Canterbury region.

National Centre for Research on Europe (NCRE)

The NCRE is the only interdisciplinary research body in Aotearoa devoted to examining the impact of the European Union in our region.

Current research themes include politics and security, economic and trade relations, culture and migration, climate change, and energy.

Other centres at UC are:

- Confucius Institute
- Hei Puāwaitanga: Sustainability, Citizenship and Civic Imagination Research Group
- Macmillan Brown Centre for Pacific Studies
- New Zealand Centre for Human-Animal Studies
- New Zealand South Asia Centre
- Kā Waimaero | Ngāi Tahu Centre.

Career opportunities

The ability to think independently and critically, write, analyse, research, problem solve, innovate, and communicate are vital skills taught as part of an Arts degree.

Graduates receive a respected, internationally recognised qualification that lays the foundation for a successful career, be it in media, government, international relations, culture, heritage, archives, public policy, research, communications, conservation, education, community, publishing, design, business, marketing, or academia.

canterbury.ac.nz/life/jobs-and-careers

Subject areas

Subject	Honours	Master's (coursework)	Master's (thesis)	PhD	PG Cert/Dip	Grad Cert/Dip
Anthropology	•	•	•	•	•	•
Applied Translation and Interpreting		•		•	•	
Art Curatorship					•	
Art History and Theory	•	•	•	•	•	•
Child and Family Psychology			•			
Chinese	•	•	•	•	•	•
Cinema Studies						•
Classics	•	•	•	•	•	•
Creative Practice				•		
Cultural Studies	•	•	•	•	•	•
Digital Humanities		•			•	
Economics	•	•	•	•	•	
Education	•		•	•	•	•
English	•	•	•	•	•	•
European Studies	•	•	•	•	•	•
French	•	•	•	•	•	•
Geography	•	•	•	•	•	•
German	•	•	•	•	•	•
History	•	•	•	•	•	•
Human-Animal Studies				•		
Human Services	•	•	•	•	•	•
International Relations and Diplomacy		•				
Japanese	•	•	•	•	•	•
Journalism				•		•
Linguistics	•	•	•	•	•	•
Māori and Indigenous Studies/Leadership	•	•	•	•	•	•
Mathematics	•		•	•	•	•
Media and Communication/Strategic Communication	•	•	•	•	•	•
Music	•	•	•	•	•	•
Pacific Studies			•	•		
Philosophy	•	•	•	•	•	•
Policy and Governance		•				
Political Science and International Relations	•	•	•	•	•	•
Psychology	•	•	•	•	•	•
Russian	•	•	•	•	•	•
Sociology	•	•	•	•	•	•
Spanish	•	•	•	•	•	•
Statistics	•		•	•	•	•
Te Reo Māori	•	•	•	•	•	•
Writing		•				

Graduate and postgraduate programmes

Qualification	Description	Requires	Start date	Duration
Bachelor of Arts with Honours <i>BA(Hons)</i>	The BA(Hons) is for high-achieving students who want to add on a year of coursework and original research to their bachelor's degree. For the range of subjects, see page 13 .	Relevant BA or a bachelor's degree or graduate diploma in a relevant discipline with grades to a specified level.	February or July*	Full-time: 1 year Part-time: up to 2 years
Graduate Diploma in Arts <i>GradDipArts</i>	Offers people with a bachelor's degree an opportunity to study Arts in-depth. Designed for graduates seeking entry into postgraduate qualifications in Arts. For the range of subjects, see page 13 .	Must have qualified for a university degree.	February or July*	Full-time: 1 year Part-time: up to 5 years
Graduate Diploma in Journalism <i>GradDipJour</i>	Gain the knowledge, skills, and competencies needed to be effective journalists. They receive intensive training on media ethics and law, news gathering and writing, research and analysis, and multimedia skills.	BA or other qualification of an equivalent standard.	February	Full-time: 1 year
Graduate Diploma in Strategic Communication <i>GradDipStratComm</i>	This is an ideal option for those wanting to add professional communication skills to their current studies or career, or for those looking to change into corporate or creative media work.	BA or other qualification of an equivalent standard.	February or July	Full-time: 1 year Part-time: up to 5 years
Postgraduate Certificate in Arts <i>PGCertArts</i>	Further study in one area of specialisation. For the range of subjects, see page 13 .	BA or an equivalent degree in a relevant discipline with grades to a specified level.	February or July*	Full-time: 6 months Part-time: 1 year
Postgraduate Certificate in Māori and Indigenous Leadership <i>PGCertMIL</i>	Involves critical analysis of models of indigenous development to prepare for further study.	Bachelor's degree with grades to a specified level and relevant professional experience. A portfolio and interview is required.	February	Part-time: 1 year
Postgraduate Certificate in Te Reo Māori <i>PGCertTREO</i>	This Certificate is for students with a strong level of te reo Māori, but no undergraduate degree, to start postgraduate studies in the language. The Certificate leads into the Postgraduate Diploma in Te Reo Māori, and subsequently Master of Te Reo Māori.	Bachelor's degree with grades to a specified level and/or relevant professional experience. A portfolio and interview is required.	February or July*	Full-time: 6 months Part-time: 1 year
Postgraduate Certificate in Translation and Interpreting <i>PGCertT&I</i>	For those wanting to work professionally in translation or interpretation. With successful completion of this degree, you will meet the requirements to apply for certification with the National Accreditation Authority for Translators and Interpreters (NAATI).	Bachelor's degree with grades to a specified level in Chinese, French, German, Japanese, Russian, Spanish, or Te Reo Māori or other approved languages; or relevant professional experience in these languages.	February	Full-time: 6 months
Postgraduate Diploma in Art Curatorship <i>PGDipArtCuratorship</i>	This Diploma consists of coursework, a special project in staging an exhibition, and a gallery internship.	BA, BFA, or degree with relevant professional experience.	February or July*	Full-time: 1 year Part-time: 2 years
Postgraduate Diploma in Arts <i>PGDipArts</i>	For graduates wishing to specialise in humanities or social science. Students can choose between a number of course combinations, offering a convenient pathway to other postgraduate study opportunities.	BA or an equivalent degree in a relevant discipline with grades to a specified level.	February or July*	Full-time: 1 year Part-time: up to 2 years

* July start subject to course availability.

Qualification	Description	Requires	Start date	Duration
Postgraduate Diploma in Te Reo Māori <i>PGDipTeReo</i>	An introduction to research-based knowledge, emphasising linguistic competence and critical thinking about a number of contemporary aspects of te reo Māori. Students who complete the Diploma with Merit or Distinction may transfer to the Master's.	Bachelor's degree in Te Reo Māori or equivalent, or bachelor's degree and relevant professional experience and fluency in te reo Māori. The <i>PGCertTeReo</i> is also a pathway into this qualification.	February or July*	Full-time: 1 year Part-time: up to 4 years
Postgraduate Diploma in Translation and Interpreting <i>PGDipT&I</i>	Develop your language expertise into a career as a translator or interpreter. Complete this degree and you will meet the requirements to apply for certification with the National Accreditation Authority for Translators and Interpreters (NAATI).	Bachelor's degree with grades to a specified level in Chinese, French, German, Japanese, Russian, Spanish, or Te Reo Māori or other approved languages; or relevant professional experience in these languages.	February or July	Full-time: 1 year Part-time: up to 2 years
Master of Arts MA	A 180-point Master of Arts degree by coursework and dissertation. For the range of subjects, see page 13 .	Bachelor's degree in an approved subject with grades to a specified level.	February or July	Full-time: 1-2 years Part-time: up to 3 years
Master of Arts (Thesis) <i>MA(Thesis)</i>	The Master of Arts (Thesis) degree consists of a 120-point thesis in a chosen subject. For the range of subjects, see page 13 .	BA(Hons) in the chosen subject with First Class or Second Class Honours Division 1.	First day of any month	Full-time: 1-2 years Part-time: up to 4 years
Master of Applied Translation and Interpretation <i>MATI</i>	Gain advanced language, cultural, and communication skills to work as professional interpreters and translators.	A degree with at least 60 points at 300-level with at least a B+ Grade Point Average in either Chinese, French, German, Japanese, Russian, Spanish, or Te Reo Māori, or other approved language; or a <i>PGCertT&I</i> or <i>PGDipT&I</i> with at least a B Grade Point Average.	February	Full-time: 12-18 months
Master of European Union Studies <i>MEuro</i>	This degree is unique in Australasia and benefits from UC's National Centre for Research on Europe. It looks at the European Union in the global context, focusing on the Asia-Pacific region and EU-NZ relations.	BA degree in a relevant subject or relevant bachelor's degree with grades to a specified level plus qualifying course.	February or July*	Full-time: 12-18 months Part-time: 2-3 years
Master of International Relations and Diplomacy <i>MIRAD</i>	Perfect for students interested in careers in foreign affairs or inter-state coordination.	Bachelor's degree with grades to a specified level (or equivalent), or bachelor's degree and relevant professional experience.	February	Full-time: 12-18 months Part-time: up to 3 years
Master of Linguistics <i>MLing</i>	Offers specialist courses in linguistic analysis as well as a significant research component. Gain a special awareness and appreciation of the linguistic situation in Aotearoa and the Pacific.	An undergraduate degree in Linguistics with at least a B+ grade average or a relevant undergraduate degree and completion of a qualifying course via distance learning (LING400) with at least a B+ grade average.	February or July	Full-time: 1 year Part-time: up to 2-3 years

* July start subject to course availability.

Qualification	Description	Requires	Start date	Duration
Master of Māori and Indigenous Leadership <i>MMIL</i>	Aims to equip the next generation of leaders across a variety of sectors with the skills, knowledge, and attributes to advance the aspirations of iwi Māori and other indigenous peoples.	Bachelor's degree with grades to a specified level and relevant professional experience, or the PGCertMIL. A portfolio and interview are required. Applications are due 30 November .	February	Full-time: 12–18 months Part-time: up to 2–3 years
Master of Policy and Governance <i>MPAG</i>	A professional capstone qualification in policy analysis and strategic decision-making, this master's will provide advanced interdisciplinary training for those wishing to progress in local, regional, national, and third sector/not-for-profit roles.	A Bachelor's or equivalent degree in any subject, with at least a B grade average.	February	Full-time: 12–18 months Part-time: up to 3 years
Master of Strategic Communication <i>MStratCom</i>	Develop your critical understanding of communication in a complex media environment. Learn skills in media writing, analytics, and research methods used in the workplace.	Bachelor's degree with at least a B grade average at 300-level, or any degree plus relevant work experience. Note: International students require an IELTS (Academic) 6.5 (or equivalent) with no individual score below 6.5.	February	Full-time: 1 year Part-time: up to 3 years
Master of Te Reo Māori <i>MTeReo</i>	Offers advanced knowledge in te reo. You will be introduced to research, with an emphasis on linguistic competence and critical thinking about various contemporary and historical aspects of te reo Māori.	Bachelor's degree in Te Reo Māori or equivalent; or bachelor's degree and relevant professional experience and high level of competency in te reo.	February or July	Full-time: 2 years Part-time: up to 4 years
Master of Writing <i>MWRIT</i>	Offers a thorough grounding in the skills common to all genres of writing — creative, professional, technical, and academic — while also allowing you to deepen your knowledge and ability in one or more genre.	Bachelor's degree with a significant written component and at least a B grade average at 300-level, or any degree plus relevant work experience.	February or July*	Full-time 12–18 months Part-time: 2–3 years
Doctor of Philosophy <i>PhD</i>	For more information on PhDs, see page 9 . For the list of available subjects, see page 13 .	Bachelor's degree with first or second-class honours division 1, or master's degree with distinction, merit, or equivalent.	Beginning of any month†	Full-time: 3–4 years Part-time: 4.5–6 years

* July start subject to course availability.

† December and January starts are not recommended.

Contact us

Te Kaupeka Toi Tangata | Faculty of Arts

E: artsdegreeadvice@canterbury.ac.nz



Umanga | Business



At Te Kura Umanga UC Business School, our innovative, research-led qualifications prepare you for a successful career.

Our taught master's programmes will equip you with the applied skills and knowledge you need to move into high-level business roles. Coursework degrees in a range of subjects like applied economics and finance, marketing, professional accounting provide an intensive learning experience covering essential operational functions of any organisation. Additionally, we also have research masters that prepare you for further postgraduate study.

Leading change

Our world-class business education encourages you to engage in projects that are impactful and affect organisational change. The School has produced graduates who became business leaders and entrepreneurs.

You'll find our graduates working in organisations that contribute to the economy and wellbeing of their communities.

Our programmes are internationally accredited by the Association to Advance Collegiate Schools of Business (AACSB) and the EFMD Quality Improvement System (EQUIS). The MBA programme is also accredited by the Association of MBAs (AMBA). This places Te Kura Umanga | UC Business School in the top 1% of Business Schools worldwide holding all three accreditations collectively known as the 'Triple-Crown'.

Industry and partnerships

Through our industry connections, we organise guest lectures and presentations by business leaders, innovators, and entrepreneurs.

Taught master's programmes can include a project or internship with a business or nonprofit organisation. The School hosts up to 15 scholars annually from top international universities through UC's Erskine programme.

Innovation and entrepreneurship

In today's business environment, innovation and entrepreneurship are key drivers for organisational growth and sustainability. Postgraduate study encourages you to analyse current viewpoints while considering future business applications in new and progressive ways.

You can gain practical business experience with Te Pokapū Rakahinonga | UC Centre for Entrepreneurship (UCE). UCE supports young entrepreneurs by hosting student-run societies such as *entré* and 180 Degrees Consulting. You can network and learn valuable skills, and develop sustainable solutions for charities and nonprofits under the guidance of industry mentors.

The UC Incubator and Summer Start-up programmes can help you start your own business venture with support, resources, and business bootcamps.



Research master's

Our academics conduct research with global application. This research informs what they go on to teach. Our academics are highly respected in their fields, attracting research students from around the world. Current research includes:

- major public policy issues, such as social and environmental accounting and reporting
- sustainable business development
- sustainable and resilient tourism
- tax compliance
- financial risk management.

Postgraduate research students complete coursework and a thesis or dissertation that involves literature reviews, data collection and analysis, and expanding the current knowledge in your chosen area.

Our postgraduate students benefit from good supervision ratios, a focus on quality research, smaller classes and closer links with staff.

Featured research

Tourism research is a distinct area of expertise. It is informed by collaborative projects with local, national, and international government bodies and nonprofit organisations such as ChristchurchNZ, the local economic development agency for Waitaha Canterbury. At the national level, we are involved in projects with Tourism Industry Aotearoa (TIA), the only independent association that represents all sectors of New Zealand's tourism industry. For example, UC researchers and students were involved in mapping tourism data sources within Aotearoa on behalf of TIA. Tourism researchers were also involved in workshops run by the Ministry of Business, Innovation and Employment (MBIE) on the tourism data domain for Aotearoa.

Practical degrees

Te Kura Umanga | UC Business School has a range of qualifications to prepare you for the dynamic business sector — whether that's upskilling, starting your own business, or learning something entirely new.

Professional master's

The Master of Professional Accounting (MPA) and Master of Applied Economics and Finance (MAFE) are our professional masters preparing you for examinations and membership of professional bodies.



The MAFE is a taught master's qualification that offers a pathway into high-level professional roles for graduates with background knowledge in microeconomics, business finance, and introductory calculus and statistics. The qualification is aligned with requirements for the CFA Institute examination.

You can move to an accounting career from a different field with our MPA, a conversion and professional degree. The MPA prepares you for membership of chartered and certified accountancy bodies such as CA ANZ, CPA Australia, and ACCA.

Master of Business Administration (MBA)

The UC MBA programme is ideal for experienced professionals who want to accelerate their careers, change industries, or upskill in their current roles to achieve impact in an environment of disruption.

Through courses on innovation, digital transformation, data-informed strategy, and responsible societal engagement, you will be equipped to tackle the challenges of a rapidly changing world and become a well-rounded leader.

While MBA students are typically middle to senior-level professionals from organisations of any size or sector, business start-ups and entrepreneurs looking to scale their ventures will also benefit from the programme as we have close ties with the UC Centre for Entrepreneurship (UCE).

We also have a large cohort of candidates from professional careers (eg. pilots, engineers, medical professionals) who enter our MBA through the Postgraduate Diploma in Business Administration pathway if they do not have undergraduate degree.

Scholarship

The Ben Gough Family Foundation Leaders Scholarship supports rising talent to undertake their MBA.

Career opportunities

Te Kura Umanga | UC Business graduates are prepared for professional roles in every kind of organisation where people need to be innovative, solve challenging problems, and make a difference.

canterbury.ac.nz/life/jobs-and-careers

Te Kura Umanga | UC Business School

T: +64 3 369 3888

E: postgradbusiness@canterbury.ac.nz



Subject areas

Subject	Honours	Master's	PhD	PG Cert/Dip	Grad Cert/Dip
Accounting	•	•	•		•
Applied Finance and Economics		•			
Business Administration		•		•	
Business		•		•	
Business Information Systems		•		•	
Digital Marketing (subject to CUAP and TEC approval)				•	
Economics	•	•	•		•
Finance	•	•	•		•
Financial Management		•			
Information Systems	•	•	•		•
Information Systems and Technology				•	
Management	•	•	•		•
Marketing	•	•	•		•
Professional Accounting		•			
Strategic Leadership				•	
Taxation		•	•		
Taxation and Accounting	•				



“The MBA is highly international with people from a wide range of industries and levels of experience. I finished a block course in multicultural negotiations which was taught by a man who’s worked all over Africa. The stories he shared aren’t from a textbook, they’re from his actual experiences doing negotiations across the globe.”

Afi
Master of Business Administration

Graduate and postgraduate programmes

Qualification	Description	Requires	Start date	Duration
Bachelor of Commerce with Honours <i>BCom(Hons)</i>	Further your expertise in your undergraduate major and explore specialist topics that can lead to entry into master's programmes by thesis.	A relevant bachelor's degree. Students must also satisfy the course prerequisites for the subject and GPA requirements for their selected major. Generally, a B+ average in 300-level courses is required.	February or July	Full-time: 1 year Part-time: up to 4 years
Graduate Diploma in Commerce <i>GradDipCom</i>	Complete advanced commerce courses and transition into research-based postgraduate study.	Any bachelor's degree with a demonstrated ability to succeed in 300-level courses.	February or July	Full-time: 1 year Part-time: up to 4 years
Postgraduate Certificate in Business <i>PGCertBus</i>	Gain general business knowledge and skills that can be applied to graduate positions across a wide range of industries. It acts as a pathway to other taught master's programmes such as the Master of Business, Master of Professional Accounting, and Master of Business Information Systems.	Any bachelor's degree with good grades in 300-level courses.	February or July	Full-time: 6 months Part-time: up to 2 years
Postgraduate Certificate in Digital Marketing <i>PGCertDigiMktg</i> (subject to CUAP and TEC approval)	Gain skills and competencies to challenge existing commercial practice, and confidence to participate in the development of innovative marketing strategies.	Any bachelor's degree with a B average or above in the 300-level courses; or at least 5 years of practical, professional, or scholarly experience in a relevant field.	February (start date subject to change; check the website)	Online: up to 24 months
Postgraduate Certificate in Information Systems and Technology <i>PGCertIST</i>	A short qualification to advance your knowledge in Information Systems.	A bachelor's degree with B average across 60 points of 300-level Information Systems or related courses.	February or July	Full-time: 6 months Part-time: up to 2 years
Postgraduate Certificate in Strategic Leadership <i>PGCertStratLdrship</i>	Designed for professionals who are looking to move into management and leadership and are seeking professional development in this area.	At least 5 years of practical, professional, or scholarly experience.	Multiple intakes throughout the year	Full-time: 12 months Part-time: up to 3 years (Online options available)
Postgraduate Diploma in Business <i>PGDipBus</i>	A flexible programme made up of 8 courses selected from UC Business School Masters qualifications.	Any bachelor's degree with a B average or above in the 300-level or equivalent courses.	February or July	Full-time: 1 year Part-time: up to 4 years
Postgraduate Diploma in Business Administration <i>PGDipBA</i>	This Diploma offers an entry pathway to the Master of Business Administration (MBA) programme, and includes 8 core courses from the MBA programme. Transfer to the MBA programme is available for those who complete the Diploma with a B average or higher.	At least 5 years' management or leadership experience.	February, May, or August	Full-time: 1 year Part-time: up to 4 years
Postgraduate Diploma in Business Information Systems <i>PGDipBIS</i>	Gain skills for Information Systems-related industries. You can go onto a study the Master of Business Information Systems.	Any bachelor's degree with a B average or above in the 300-level or equivalent courses.	February or July	Full-time: 1 year Part-time: up to 4 years

Graduate and postgraduate programmes (continued)

Qualification	Description	Requires	Start date	Duration
Postgraduate Diploma in Information Systems and Technology <i>PGDipIST</i>	Explore Information Systems to deepen your knowledge in the area or to prepare yourself for further research.	A bachelor's degree with a B average across 60 points of 300-level Information Systems or related courses.	February or July	Full-time: 1 year Part-time: up to 4 years
Master of Applied Finance and Economics <i>MAFE</i>	This is a master's degree in both Finance and Economics. Students take advanced coursework in both subjects, followed by a practical course.	Any bachelor's degree with a B average or above in the 300-level or equivalent courses. Must have intermediate economics and finance and basic statistics and calculus.	January (for international students), February, or July	Full-time: 12–18 months Part-time: up to 4 years
Master of Business <i>MBus</i>	Explore business basics, then focus on either Financial Management, Management, Marketing, or Supply Chain Management. It also includes project opportunities through our industry contacts.	Any bachelor's degree with a B average or above in the 300-level or equivalent courses.	February or July	Full-time: 17 months Part-time: up to 4 years
Master of Business Administration <i>MBA</i>	The MBA offers a chance to upskill, make a career change, and gain relevant business connections and experiences. Your study involves coursework and a consulting project. There are also seminars, guest lectures, and networking events.	At least five years' work experience, and completed either a bachelor's degree or the Postgraduate Diploma in Business Administration with a B average or higher.	February, May, or August	Full-time: 16 months Part-time: up to 5 years
Master of Business Information Systems <i>MBIS</i>	Take advantage of the increasing demand for 'tech-savvy' business graduates. Combining business studies with information systems, the MBIS is designed to equip you with the specialist knowledge and skills to manage technology-driven innovation in business.	Any bachelor's degree with a B average or above in the 300-level or equivalent courses.	February or July	Full-time: 17 months Part-time: up to 4 years
Master of Commerce <i>MCom</i>	The MCom is comprised of taught coursework and independent research in the form of a thesis or project. With advanced knowledge, skills, and competencies, MCom graduates are well prepared for professional roles and business consulting.	A bachelor's degree in the same subject with a B+ average or above in 300-level courses or a relevant graduate diploma with good grades.	February or July [†]	Full-time: 12–18 months Part-time: 18–36 months
Master of Marketing <i>MMktg</i> (subject to CUAP and TEC approval)	Gain in-depth knowledge, digital literacy, and a critical understanding of theoretical concepts, frameworks, and industry practices within the marketing field.	Any bachelor's degree with a B average or above in the 300-level or equivalent courses.	February	Full time: 17 months Part-time: Up to 4 years
Master of Professional Accounting <i>MPA</i>	The MPA is a conversion taught master's that will give you the skills to be a highly effective accountant. Leads to provisional membership of professional bodies such as Chartered Accountants Australia and New Zealand.	Any bachelor's degree with a B average or above in the 300-level or equivalent courses.	February or July	Full-time: 18 months Part-time: up to 4 years
Doctor of Philosophy <i>PhD</i>	The PhD comprises advanced research presented in a thesis. See page 9 for more information about PhD study at UC.	Bachelor's degree with first-class or second-class honours division 1, or research-based master's degree with first-class or second-class honours, or equivalent.	Beginning of any month	Full-time: 3–4 years Part-time: 4.5–6 years

[†] Applicants who begin in July will normally need to spend 3 semesters (18 months) to complete the MCom. This is because there are mandatory courses which begin in February only. If you intend to start in July, please be aware that this will incur an additional 6 months of other expenses.

Ako | Education



UC's Te Kaupeka Ako Faculty of Education, builds on a 135-year tradition and is ranked among the world's top 250 universities for Education.*

Professional development and specialisation

Many teachers and educational specialists can focus in an area of teaching they are passionate about, or strengthen their practice, or further develop their range of skills like inclusive education, literacy, e-learning, languages, or leadership.

Others who work with young people and lead community organisations can expand their expertise to better understand local and global issues and create meaningful change.

Study options

Students seeking to become registered teachers and who have already completed a recognised degree can apply for a graduate diploma (early childhood, primary, or secondary), postgraduate diploma, or master's degree (primary or secondary teacher education).

Supportive study environment

You will learn in an encouraging and collegial environment on campus or by distance, full or part-time. Teaching staff are specialists who have close links with local schools and their teaching draws on practical experience and the latest research.

Research

Our research advances educational knowledge and evaluates education practice, resulting in opportunities for our students to carry out topical research.

The Faculty has links with international institutions, so you can enhance your professional development through customised courses for teachers and teacher educators, educational tours and consultancies, and staff and student exchanges.

Key research areas/groups include:

- Learning Environments
- Pedagogies of Possibility
- Digital Education Futures Lab
- Language and Literacy Research Lab
- Māori Research Lab
- UC Community Engagement Hub
- UC Child Wellbeing Research Institute.

Career opportunities

Education

Teaching is a creative, stimulating, and rewarding career where you can influence and shape lives. Teaching also leads to careers beyond the classroom, like in public sector, youth work, and business and industry training.

Youth and Community Leadership

Postgraduate study in youth and community leadership enables you to develop your leadership identity, and address issues faced by youth and community organisations in local and global contexts. Varied career opportunities can open up including work in education, government, commerce, social service agencies, community, and voluntary organisations.

canterbury.ac.nz/life/jobs-and-careers

Te Kaupeka Ako | Faculty of Education

T: +64 3 369 3333

E: educationadvice@canterbury.ac.nz



* QS World University Rankings by Subject, 2024



Medal-winning UC lecturer weaves love of sport and community into teaching

Dr Phil Borell (Ngāti Ranginui, Ngāti Tūwharetoa), Senior Lecturer in the School of Māori and Indigenous Studies, is passionate about making teaching interactive and inclusive. His research areas include Indigenous masculinity and identity, the politics of sport, and sport and education — all the things he loves and gets to teach about.

“The way that I teach is always student focused. Realising how influential you can be on a student’s time at university motivated me to constantly reevaluate what I’m doing in my teaching, how can I be better, how can we improve the student experience?”

He started studying at UC in 2002 and began teaching here in 2008.

He graduated with a master’s degree in 2013 and completed his PhD in 2022.

Qualifications leading to Teacher Registration

NOTE: For the teaching qualifications listed below, applications are open anytime, but close on **1 December** (for domestic students) and **31 October** (for international students) the year prior to the programme commencing. Applications may close earlier if the teaching placement capacity has been reached. Acceptance is subject to a selection process. Special requirements apply for those whom English is a second language. For more information, email educationadvice@canterbury.ac.nz.

Qualification	Description	Requires	Start date	Duration
Postgraduate Diploma in Teaching and Learning (endorsed in Primary or Secondary) <i>PGDipTchgLn</i>	Primary: For graduates interested in training to become a primary school teacher. Consists of 150 points of coursework and includes 80 days of professional practice in schools.	Bachelor’s degree with at least a B average at 300-level.	January	Full-time: 1 year
	Secondary: For graduates interested in training to become a secondary school teacher. Consists of 150 points of coursework and includes 80 days of professional practice in schools.	Bachelor’s degree with study from levels 5 to 7 (ie, 100 to 300-level papers in a subject area relevant to the school curriculum) and with at least a B average.	January	Full-time: 1 year
Master of Teaching and Learning <i>MTchgLn</i>	Primary: For graduates interested in training to become a primary school teacher. Consists of 180 points of coursework and includes 80 days of professional practice in schools.	Bachelor’s degree or higher degree in a disciplinary field appropriate to teaching and learning (with a B grade average at 300-level).	January	Full-time: 1 year
	Secondary: For graduates interested in training to become a secondary school teacher. Consists of 180 points of coursework and includes 80 days of professional practice in schools.	Bachelor’s degree with study from levels 5 to 7 (ie, 100 to 300-level papers in a subject area relevant to the school curriculum) and with at least a B average.		

Professional development for Educators

Qualification	Description	Requires	Start date	Duration
Postgraduate Certificate in Education <i>PGCertEd</i>	The <i>PGCertEd</i> is designed to provide those with an education or counselling background the opportunity to improve their professional practice and assess significant issues in education. Students may proceed to the <i>PGDipEd</i> or the <i>MEd</i> .	Degree with at least 60 points in Education; or an appropriate degree and have either completed a minimum 1-year teacher training course or have experience as a teacher, educator, or counsellor.	February, July, or November*	Full-time: 6–12 months Part-time: up to 2 years

* November start subject to course availability.

Professional development for Educators (continued)

Qualification	Description	Requires	Start date	Duration
Postgraduate Certificate in Tertiary Teaching <i>PGCertTertTchg</i>	Pursue a range of teaching and learning themes to build on specific knowledge and to consider academic practices from various disciplines.	Be practising in tertiary teaching and have an appropriate bachelor's degree, or equivalent qualifications and experience in your field of teaching.	February or July	Part-time: 1–4 years
Postgraduate Diploma in Education <i>PGDipEd</i>	The PGDipEd is designed to improve professional practice and examine critically significant issues in education. The PGDipEd can be completed unendorsed or endorsed. It can be endorsed in the following: <ul style="list-style-type: none"> • Early Years (subject to CUAP approval due December 2024) • Digital Education Futures • Inclusive and Special Education • Leadership • Literacy • Teaching and Learning Languages • Tertiary Teaching Students with a B+ average or better may proceed to the MEd.	Bachelor's degree with a major in Education or related discipline, or equivalent qualification with a B grade average; or completed any bachelor qualification and hold a professional teaching qualification.	February or July	Full-time: 1 year Part-time: up to 4 years
Postgraduate Diploma in Hōaka Pounamu <i>PGDipHP</i>	Enables you to use more te reo Māori in the classroom. The programme aims to promote leadership and raise the knowledge of te reo Māori in bilingual, immersion, and mainstream settings.	A teaching qualification, or appropriate bachelor's degree with a major in Education or related discipline with a B grade average. Application involves a selection process including an interview and te reo Māori language competency assessment.	February or July	Full-time: 12 months Part-time: 24 months
Master of Education <i>MEd</i>	A 180-point coursework (or 90 points of coursework and a 90-point thesis) pathway for students to further their knowledge of theory and research in education. Can be completed unendorsed or endorsed: <ul style="list-style-type: none"> • Early Years (subject to CUAP approval due December 2024) • Digital Education Futures • Inclusive and Special Education • Leadership • Literacy • Teaching and Learning Languages • Tertiary Teaching** 	Appropriate degree with courses in Education, Psychology; or any degree, and a minimum 1-year teacher training course or have experience as a teacher, educator, or counsellor (a B grade average at 300-level required).	February, July, and November*	Full-time: 18 months Part-time: up to 5 years
Master of Education (Thesis) <i>MEd(Thesis)</i>	A thesis qualification that allows students to demonstrate advanced knowledge in their field of educational research. You have the option of completing either: <ul style="list-style-type: none"> • 120-point thesis • 30-point research methods course and a 90-point thesis (this option is for students who have not studied research methods at postgraduate level) 	Bachelor's degree with a major in Education or related discipline, or equivalent qualification with a B grade average; or completed any bachelor qualification and hold a professional teaching qualification.	Beginning of any month for thesis enrolments. February or July for those needing to complete the research methods course first.	Full-time: 2 years Part-time: up to 4 years

* November start subject to course availability.

** This endorsement is for those already working in tertiary teaching.

Professional development for Educators (continued)

Qualification	Description	Requires	Start date	Duration
Master of Hōaka Pounamu <i>MHP</i>	Enables you to use more te reo Māori in the classroom. The programme aims to promote leadership and raise the knowledge of te reo Māori in bilingual, immersion, and mainstream settings.	A teaching qualification, or appropriate bachelor's degree with a major in Education or related discipline, with a B grade average. Application involves a selection process including an interview and te reo Māori language competency assessment.	February or July	Full-time: 18 months Part-time: up to 4 years
Doctor of Education <i>EdD</i>	Aimed at Education professionals and other related fields. Doctoral students will synthesise theory and address questions of professional practice while further developing their leadership capacities.	A bachelor's degree with first or second class honours, or a master's degree with distinction or merit, and a minimum of 5 years' experience in a relevant professional role.	1 March	First two years part-time as part of a cohort; then completed over four years part-time or two years full-time.
Doctor of Philosophy <i>PhD</i>	For more details about PhD study, see page 9 .	Bachelor's degree with first or second-class division 1 honours, or master's degree with first-class or second-class honours, or equivalent.	Beginning of any month	Full-time: 3–4 years Part-time: 4.5–6 years

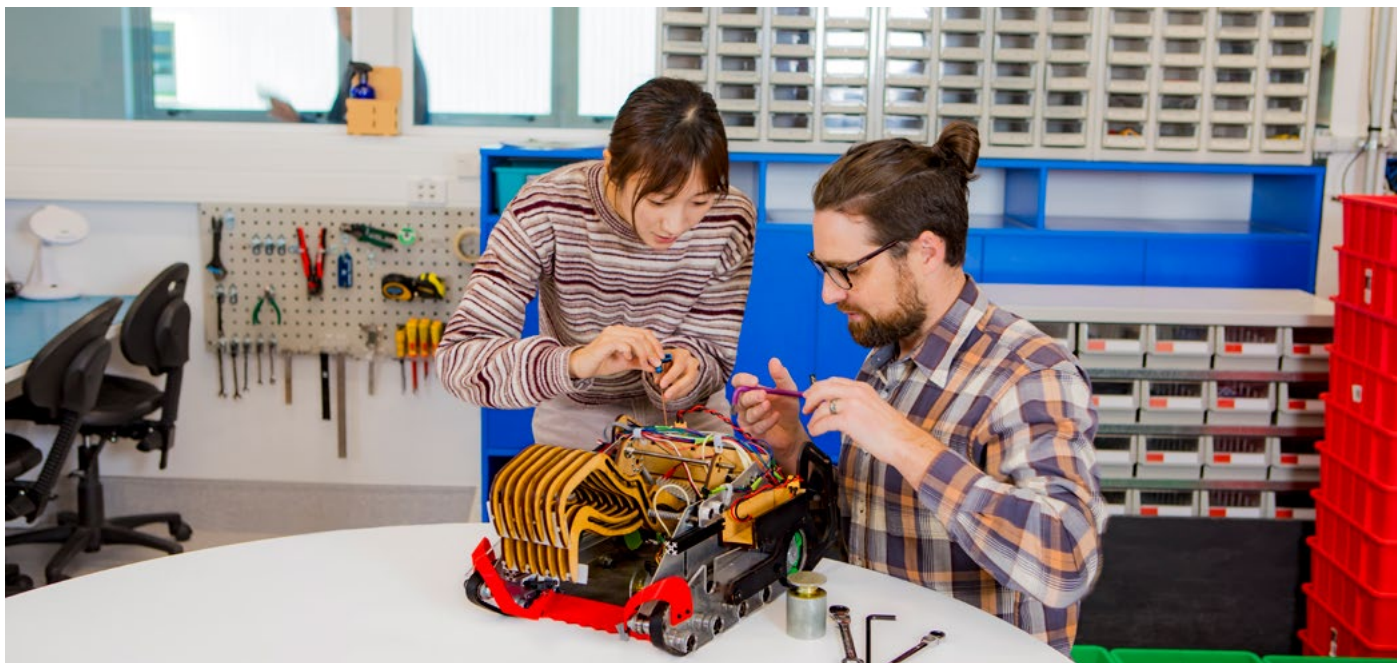
Language educator programmes

Qualification	Description	Requires	Start date	Duration
Postgraduate Certificate in Teaching English to Speakers of Other Languages <i>PGCertTESOL</i>	Ideal fast-track qualification for those who may have come to the career of English language education through an indirect route and wish to undertake professional development or for graduates interested in entering the TESOL profession.	Appropriate bachelor's degree with a B grade average or better.	July or November	Part-time: 12–18 months
Master of Teaching English to Speakers of Other Languages <i>MTESOL</i>	Ideal fast-track qualification for those who may have come to the career of English language education through an indirect route and wish to undertake professional development or for graduates interested in entering the TESOL profession.	Appropriate bachelor's degree (a B grade in 300-level courses is normally expected). Relevant work experience will also be considered.	February, July, or November	Full-time: 1 year Part-time: up to 4 years

Youth and Community Leadership programmes

Qualification	Description	Requires	Start date	Duration
Postgraduate Certificate in Youth and Community Leadership <i>PGCertYCL</i>	The certificate will appeal to people interested or already engaged in community work as leaders.	Bachelor's degree with B average.	February	Full-time: 1 semester Part-time: 1 year
Postgraduate Diploma in Youth and Community Leadership <i>PGDipYCL</i>	The diploma will examine leadership theories in order for students to justify their own approaches to leadership practice. It includes features of Māori and Pacific leadership, leadership as partnering, and youth and community leadership in a global context.	Bachelor's degree with B average.	February	Full-time: 1 year Part-time: up to 4 years

Pūhanga | Engineering



Te Kaupeka Pūhanga Faculty of Engineering provides internationally recognised qualifications, professional development, and is in the global top 100 for Civil Engineering.*

Founded in 1887 as the first School of Engineering in Aotearoa, UC's Te Kaupeka Pūhanga | Faculty of Engineering is internationally recognised for its teaching and research excellence.

The Faculty offers both coursework and research-based qualifications, including postgraduate certificates, master's, and doctoral degrees. Many qualifications are flexible and are ideal for the working professional interested in upskilling, including those who live outside of Ōtautahi Christchurch.

* QS World University Rankings by Subject, 2024.

Postgraduate resources

UC Engineering features well-equipped workshops, laboratories, and computer facilities, and a specialist Te Puna Pūkaha me te Pūtaiao Engineering and Physical Sciences Library (EPS).

University and industry scholarships are also available for postgraduate students.

Academic and industry expertise

You'll benefit from the Faculty's close interaction with industry, helping attract financial support for research as well as opportunities to establish professional networks.

A number of research centres are housed in Te Kaupeka Pūhanga | Faculty of Engineering and there are strong relationships with other research centres in Aotearoa.

Research projects can involve national research institutes and organisations in industry.

The Faculty regularly hosts visiting academics from top international universities as part of the University's Erskine programme, allowing our students and staff to interact with world leaders in their respective fields.

Research

Te Kaupeka Pūhanga | Faculty of Engineering's overarching aim is to contribute to the community in all areas of our research, from safe buildings to medical technology, and provide graduates who will help fulfil this mission.

Creativity and innovation are encouraged and research collaborations are often interdisciplinary, with projects spanning across departments and research centres. Strong links with related disciplines including Forestry, Computer Science, Mathematics, Statistics, Product Design, Physics, Astronomy, Chemistry, and Geology enable highly specialised research at postgraduate level.

Research centres include the Electric Power Engineering Centre (EPECentre), Tangata Hangarau, Hangarau Tangata | Human Interface Technology Laboratory (HIT Lab NZ), Wireless Research Centre (WRC), Spatial Engineering Research Centre (SERC), and the UC Quake Centre.

Examples of research areas

Chemical and Process Engineering

Energy and fuels, battery technology, catalysis, biochemical processes, food process engineering, electrochemical engineering, industrial measurement technology, computational techniques, and wood technology.

Civil and Natural Resources Engineering

Structural, geotechnical, transportation, environmental, water and fluids, hydrological and ecological, renewable energy, humanitarian engineering, architectural engineering, fire, and earthquake engineering.

Electrical and Computer Engineering

Acoustics, communications, computational imaging, nanotechnology, networking, electronics, and power systems.

Forest Engineering

Operational efficiency, forestry engineering, equipment development and testing, worker safety, road and stream crossing design, and environmental standards.

Human Interface Technology

Virtual reality, augmented reality, applied game design, and human-robot interaction.

Mechanical Engineering

Acoustics, aerospace, automation, automotive, autonomous systems, biomedical, computational mechanics, computer-aided design, design and ergonomics, energy systems, Industry 4.0, manufacturing, microtechnology, robotics, structural analysis, and thermofluid mechanics.

Software Engineering

Cyber security, machine learning, computer vision, artificial intelligence, computer graphics, networking, autonomous robots/drones, intelligent tutoring and health systems, software quality, spacial data science, and computer science education.

Professional development courses

Professional engineers are required to be highly skilled, up-to-date, and technically competent in their chosen field. Our professional development courses will help working engineers understand and apply new technologies, stay ahead of industry trends, and advance their career.

Teaching staff

Our lecturers are a mix of academics and industry experts, giving our students the best of both research knowledge and professional experience.

Delivery format

These courses are run in block-mode or flexible format, enabling participants to enrol in individual courses that fit around work commitments. They are also ideal for those living outside of Ōtautahi Christchurch.

Block courses are generally run over a 3-day period of lectures during a week, with a 6-week break in between for independent study and readings, followed by another 3-day period of lectures.

What do I get at the end of it?

As part of a Certificate of Proficiency, several of these block courses can be taken as a one-off course without committing to a qualification. Alternatively, courses may be credited to the Postgraduate Certificate in Engineering, Postgraduate Certificate in Civil Engineering, Master of Engineering Studies, Master of Civil Engineering, or Master of Architectural Engineering.

Eligibility

To be eligible for these courses, you should hold a 4-year Bachelor of Engineering with Honours degree, or another relevant degree, or suitable work experience. Some courses will have required prerequisites. It is best to discuss your background with the Postgraduate Director of Studies before enrolment.

Career opportunities

Over the past decade, there has been an increase in the number of top industrial positions filled by engineers with postgraduate qualifications.

These qualifications are now viewed as more than a way of specialising for a future in research or academia, and allow you to gain skills which will open new, high-level career options.

Postgraduate degrees in Engineering prepare students for careers in business leadership positions, where extended analytical skills are increasingly valued.

canterbury.ac.nz/life/jobs-and-careers



“UC is definitely one of the best choices, because there is so much civil engineering research going on campus and lots of working professionals who are teaching there, which makes the lectures way more practical.”

Tonny

Master of Architectural Engineering in Integrated Building Design

Te Kaupeka Pūhanga | Faculty of Engineering

T: +64 3 369 1717

E: engpgdegreeadvice@canterbury.ac.nz



Subject areas

Subject	Master's	PhD	PG Cert/Dip
Aerospace Engineering	•		
Applied Data Science*	•		•
Architectural Engineering	•		•
Artificial Intelligence*	•		
Bioengineering	•	•	
Chemical and Process Engineering	•	•	
Civil Engineering	•	•	•
Construction Management	•		•
Earthquake Engineering	•	•	•
Electrical and Electronic Engineering	•	•	
Engineering	•		•
Engineering Geology*	•	•	
Engineering Management	•	•	•
Financial Engineering*	•		•
Fire Engineering	•	•	•
Forest Engineering		•	
Geotechnical Engineering	•		•
Human Interface Technology	•	•	
Mathematical Sciences	•		
Mechanical Engineering	•	•	•
Renewable Energy	•	•	•
Software Engineering	•		
Structural Engineering	•		•
Structural Fire Engineering	•		•
Transportation Engineering	•	•	•
Water Engineering	•		•

* These subjects are taught by the Faculty of Science. Please contact the Faculty for study advice — see [page 47](#) for contact details.

Postgraduate programmes

Qualification	Description	Requires	Start date	Duration
Postgraduate Certificate in Architectural Engineering <i>PGCertArchEng</i>	Provides building design professionals with practice-focused education. The Certificate uses a holistic approach to integrated collaborative building design, promoting sustainability and affordability of buildings.	BE(Hons) or an appropriate 4-year bachelor's degree in a subject related to building design.	February or July	Full-time: 6 months Part-time: up to 2 years
Postgraduate Certificate in Civil Engineering <i>PGCertCivilEng</i>	Offers a flexible programme in advanced knowledge of civil infrastructure and industry. It offers a pathway into the Master of Civil Engineering.	BE(Hons), or BSc(Hons) in appropriate subjects.	February or July	Full-time: 6 months Part-time: up to 2 years
Postgraduate Certificate in Engineering <i>PGCertEng</i>	For professional engineers seeking advanced technical training or students looking for a one-semester advanced qualification. May be awarded unendorsed, or endorsed in Fire Engineering or Mechanical Engineering. You may be able to transfer to a master's degree.	BE, BE(Hons), or BSc(Hons) in appropriate subjects.	February or July	Full-time: 6 months Part-time: up to 4 years

Postgraduate programmes (continued)

Qualification	Description	Requires	Start date	Duration
Postgraduate Diploma in Applied Data Science <i>PGDipADS</i>	Build your data science capabilities and combine these with the skills and knowledge acquired from previous studies.	A university undergraduate degree, B average in relevant 300-level courses.	February or July	Full-time: 1 year Part-time: 4 years
Postgraduate Diploma in Engineering Management <i>PGDipEM</i>	Designed as a pathway qualification into the Master of Engineering Management. There is a strong focus on project management, stakeholder engagement, and sustainability. You will have small group classes, flexibility, and be able to build close connections with industry.	BEngTech, BE(Hons), BSc(Hons) in appropriate subjects with a GPA of at least 3 in 300-level and higher courses.	February	Full-time: 10–17 months
Master of Aerospace Engineering <i>MAerospaceEng</i>	Gain specialised knowledge and skills in Aerospace Engineering, combining a thesis and coursework. You will learn about established and emerging aerospace technologies and processes, and be introduced to the impact of the aerospace industry worldwide, including contemporary practice in professional ethics, legal, environmental, and safety guidelines.	BE(Hons) with first or second-class honours, BSc(Hons), BSc in appropriate subjects with GPA of at least 5.	February or July	Full-time: 18 months Part-time: 3 years
Master of Applied Data Science <i>MADS</i>	Build your data science capabilities and combine these with the skills and knowledge acquired from previous studies.	A university undergraduate degree, B average in relevant 300-level courses.	February or July	Full-time: 1 year Part-time: up to 3 years
Master of Architectural Engineering <i>MArchEng</i>	A practice-focused taught Master's degree for gaining professional, collaborative building design skills, and advanced training in selected technical areas of building design. The degree can be endorsed in: <ul style="list-style-type: none"> • Building Services and Energy Engineering • Integrated Building Design • Structural Engineering. 	An appropriate 4-year bachelor's degree with first or second-class honours in a subject related to building design, or a Postgraduate Certificate in Architectural Engineering with a B average. One year of professional practice experience is strongly recommended.	February or August*	Full-time: 1 year Part-time: up to 4 years
Master of Artificial Intelligence <i>MAI</i>	Learn and use advanced Artificial Intelligence (AI) theories, software, and tools. You will get to make real-world applications through project work in an area of AI.	A bachelor's degree in a relevant subject like Computer Science, Computer Engineering, Software Engineering, or Data Science, with a B Grade Point Average in 300-level Computer Science courses.	February or July	Full-time: 1–1.5 years Part-time: 3 years
Master of Civil Engineering <i>MCivilEng</i>	This taught Master's enhances your knowledge and skills, improving your career prospects. The <i>MCivilEng</i> can be awarded unendorsed, or endorsed in Construction Management, Earthquake Engineering, Geotechnical Engineering, Structural Engineering, Structural Fire Engineering, Transportation Engineering, and Water Engineering. The <i>MCivilEng</i> also includes an Indigenous Consultation and Engagement workshop.	BE(Hons) with first or second-class honours, or BSc(Hons) with first or second-class honours in appropriate subjects, or a <i>PGCertCivilEng</i> with good grades.	February or July	Full-time: 1 year Part-time: 4 years

July start subject to course availability.

* August only start for Structural Engineering, to be confirmed for Building Services and Energy Engineering.

Postgraduate programmes (continued)

Qualification	Description	Requires	Start date	Duration
Master of Engineering <i>ME</i>	An endorsed degree that aims to provide a learning environment where you can develop your problem-solving skills through supervised research. The ME has thesis-only endorsements in Bioengineering, Chemical and Process Engineering, Electrical and Electronic Engineering, Mechanical Engineering, Software Engineering, and Transportation Engineering. The ME also has endorsements that require coursework and research in Civil Engineering, Construction Management, and Earthquake Engineering.	BE(Hons) with first or second-class honours, or BSc(Hons) with first or second-class honours in appropriate subjects; or a PGCertEng with a GPA of 5 or more. Application is required by 10 January (for February intake) and 15 June (for July intake).	Start date can vary. Check with the department.	Full-time: 1–3 years
Master of Engineering in Fire Engineering* <i>MEFE</i>	Fire engineers specialise in the application of science and engineering principles to protect people and their environment from destructive fire. In the first half of the degree, you will take block courses in areas such as fire dynamics and fire safety and systems. Online learning software is used for flexible study. The second half of the degree requires a thesis.	BE(Hons), or BSc(Hons) in appropriate subjects, with first or second-class honours, or a PGCertEng with a GPA of 5 or more. It is recommended that international students apply by June .	February	Full-time: 16–36 months
Master of Engineering Management <i>MEM</i>	This programme is designed to meet the need for engineering managers in Aotearoa. It is focused on project management, stakeholder engagement, and sustainability. You will have small group classes, flexibility, close connections with industry, and the ability to apply integrated technical and business skills in an industry-based project.	BE(Hons) or other appropriate degree.	February	Full-time: 12–19 months
Master of Engineering Studies <i>MEngSt</i>	This taught master's degree is for professional engineers seeking advanced technical training. The degree may be awarded unendorsed or endorsed in Mechanical Engineering or Renewable Energy.	BE(Hons) or BSc(Hons) with first or second class honours in appropriate subjects; or a PGCertEng with a GPA of 5 or more.	February or July	Full-time: 1 year Part-time: 5 years
Master of Financial Engineering <i>MFEEng</i>	This cross-disciplinary degree directly links real-world problems in financial engineering to an underlying theoretical framework. You will become capable of high-level performance in the financial industry.	Any bachelor's degree (including Statistics, Mathematics, and Finance courses, or completion of a qualifying course), normally with a B+ grade average.	February	Full-time: 1 year
Master of Fire Engineering Studies* <i>MFireEngSt</i>	This taught master's degree is for professional engineers seeking advanced technical training in Fire Engineering.	BE(Hons) or BSc(Hons) with first or second-class honours, or PGCertEng with a GPA of 5 or more.	February or July	Full-time: 1 year Part-time: 5 years

* Those who do not have an appropriate background in fire engineering may be required to take ENGR403 Introduction to Fire Engineering in January prior to being approved into the programme.

Postgraduate programmes (continued)

Qualification	Description	Requires	Start date	Duration
Master of Human Interface Technology <i>MHIT</i>	Human Interface Technology aims to improve interactive technology to meet users' needs. You will learn interface design principles, how to evaluate hardware and software, and research and development skills. This degree prepares you for a career with wide application to areas such as health, education, entertainment, and business.	Bachelor's degree with honours in an appropriate field.	February	Full-time: 12 months
Master of Mathematical Sciences <i>MMathSci</i>	This degree teaches mathematics, computational and applied mathematics, and statistics. Your studies give you the opportunity to critique theory and create new knowledge in the mathematical sciences field. The degree can be awarded unendorsed or endorsed in: <ul style="list-style-type: none"> • Computational and Applied Mathematics • Mathematics • Statistics • Data Science • Financial Engineering. 	Bachelor's degree in a relevant subject, and have passed at least 60 points of your 300-level courses with at least a B grade average.	February or July	Full-time: 18 months Part-time: 3 years
Doctor of Philosophy <i>PhD</i>	The PhD comprises advanced research presented in a thesis. For more information, see page 9 .	Bachelor's degree with first or second-class division 1 honours, or master's degree with first or second-class division 1 honours, or equivalent.	Beginning of any month	Full-time: 3–4 years Part-time: 4.5–6 years
Doctor of Philosophy in Renewable Energy Engineering	The PhD in Renewable Energy Engineering is designed for visionary leaders and researchers who are driven to shape the future of global energy systems. This program offers cutting-edge research opportunities, access to state-of-the-art facilities, and interdisciplinary collaboration with world-renowned experts.			

July start subject to course availability.



“This programme is so independent and allows me to focus on my research area of interest. I also love how collaborative the environment is. I love the structure of the programme; it is unlike anything that other universities offer.”

Aishvarya

Master of Human Interface Technology

Kōwaiwai | Fine Arts



UC's Te Kura Kōwaiwai Ilam School of Fine Arts has been producing high-quality graduates since 1882. Many have contributed to cultural life and achieved acclaim in Aotearoa and globally.

Te Kura Kōwaiwai | School of Fine Arts' staff are highly qualified and experienced artists, graphic designers, curators, filmmakers, art historians, and art theorists.

The School offers opportunities to gain valuable exhibition experience through an ongoing professional relationship with Te Puna o Waiwhetū | Christchurch Art Gallery.

Colourful experiences await

The extensive exhibition programme is closely linked to the artist-in-residence and teaching programmes. Visiting international artists share their expertise with postgraduate students. Similarly, international student exchange agreements provide opportunities to attend prominent international art schools including Nova Scotia College of Art and Design.

On-campus facilities

The School provides you with studio space, well-equipped workshops, digital labs, darkrooms, and film and video facilities. In addition, there is an on-site gallery, and a visual arts and art history section in UC's Puaka-James Hight Library. This features a slide collection of 100,000 images and one of the country's top fine arts collections.

A reputation for innovation

We have a reputation for innovation and excellence, with many of our graduates becoming leading artists and museum professionals in Aotearoa.

Career opportunities

Alongside the creative and practical skills learned, Fine Arts graduates develop excellent skills in organisation and time management. These skills prepare graduates for a wide range of employment opportunities.

Recent graduates have been employed as artists, art gallery directors, photojournalists, commercial photographers, film directors, designers, consultants, art conservators, illustrators, fashion designers, art critics, art historians, graphic designers, lecturers, and art teachers.

canterbury.ac.nz/life/jobs-and-careers

Te Kura Kōwaiwai
Ilam School of Fine Arts

E: artsdegreeadvice@canterbury.ac.nz



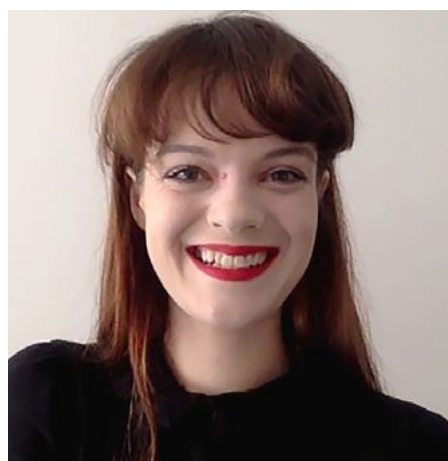
Subject areas

Subject	Master's	PG Cert/Dip	PhD
Art Curatorship		•	
Creative Practice			•
Film	•	•	
Graphic Design	•	•	
Painting	•	•	
Photography	•	•	
Sculpture	•	•	

Postgraduate programmes

Qualification	Description	Requires	Start date	Duration
Postgraduate Diploma in Art Curatorship <i>PGDipArtCuratorship</i>	The PGDipArtCuratorship consists of coursework, a special project in staging an exhibition, and a gallery internship.	BA, BFA, or a bachelor's degree and relevant professional experience.	February or July	Full-time: 1 year Part-time: 2 years
Postgraduate Diploma in Fine Arts <i>PGDipFineArts</i>	The PGDipFineArts programme comprises advanced technical studio work, and written research in either Film, Graphic Design, Painting, Photography, or Sculpture.	BFA with a B grade average; or a degree or a three-year diploma in fine arts, and professional experience.	February	Full-time: 1 year Part-time: 2 years
Master of Fine Arts <i>MFA</i>	The MFA programme comprises a submission of work in Film, Graphic Design, Painting, Photography, or Sculpture.	BFA(Hons) or equivalent with grades to a specified level, or significant professional practice or teaching experience. A special application for admission must be made by 1 November .	February	Full-time: 1 year Part-time: 2 years
Doctor of Philosophy in Creative Practice <i>PhD in Creative Practice</i>	Involves original creative work as well as a written thesis involving critical reflection and/or theoretical analysis of your research question.	Bachelor's degree with first or second-class division 1 honours, or master's degree with distinction, merit, or equivalent.	Beginning of any month	Full-time: 3–4 years Part-time: 4–5–6 years

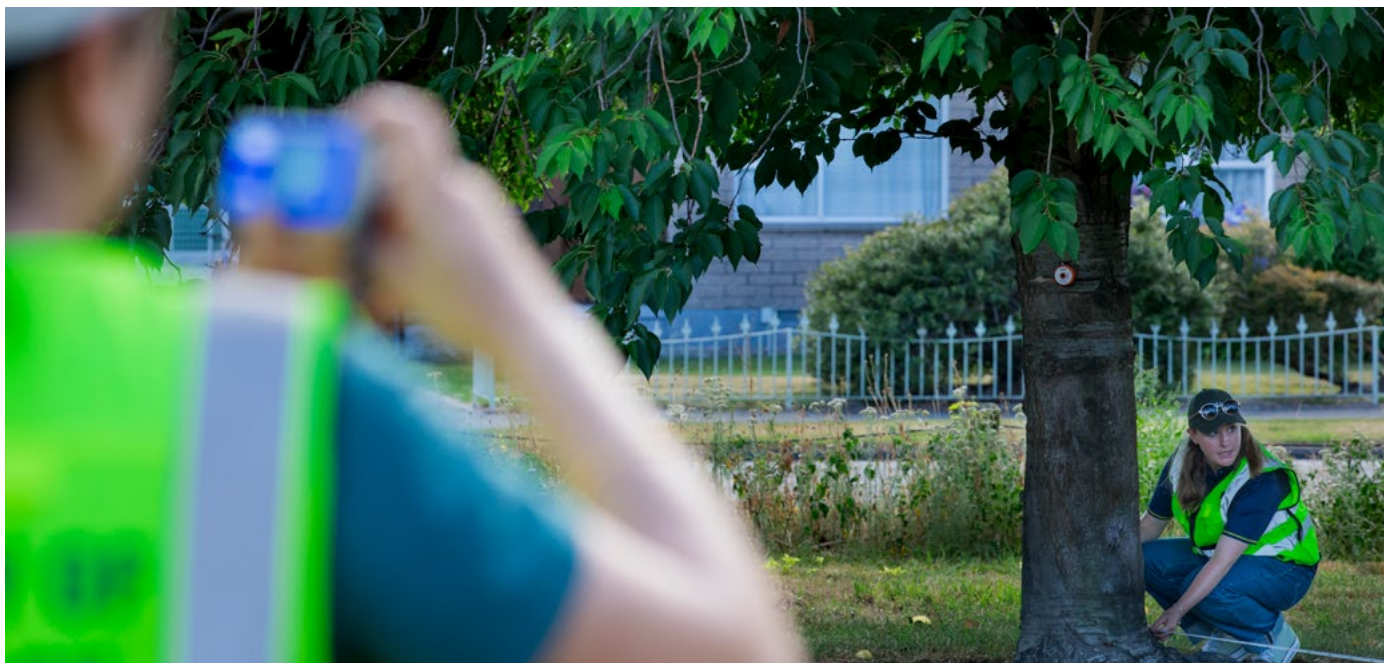
July start subject to course availability.



“My study taught me, among other things, ways of seeing, to think critically, and to be open-minded. Being able to apply these things in my everyday life is rewarding and makes it all worthwhile.”

Mikaela
Master of Fine Arts in Sculpture

Ngahere | Forestry



Te Kura Ngahere School of Forestry at UC is internationally renowned for research and postgraduate education over a range of subjects.

UC is the only university in the country offering internationally recognised professional postgraduate Forestry programmes.

Our areas of expertise include forest management, biodiversity, pest management, GIS and remote sensing, silviculture, forest economics, marketing, harvesting and transportation, forest ecology and conservation, wood science and wood quality, forest genetics and breeding, and forest soils.

Close connections

International experts visit regularly to share their knowledge through the Erskine Fellowship programme and an industry visitors programme.

The School's close relationship with other departments, including Te Kura Pūtaiao Koiora School of Biological Sciences, Te Kaupeka Pūhanga | Faculty of Engineering, and Te Kura Umanga | UC Business School, allows postgraduate students to benefit from a broad range of academic and technical expertise.

A number of scholarships are available for postgraduates funded by UC, the government, and organisations and donations.

Te Kura Ngahere | School of Forestry provides a range of services to the industry including research, consultancy, professional development (CPD), and continuing education.

www.forestry.ac.nz

Field work and stations

Our excellent laboratory and field facilities support postgraduate research. Students have many opportunities to work in the field, visit forestry organisations throughout the country, and participate in field trips to Kawatiri Westport, field stations near Arthur's Pass, in the Whakatū Nelson region, as well as the Waitaha Canterbury area.

Research

The School's academic staff are actively engaged in research on forest management, forest valuation, forest modelling, tree breeding and quantitative genetics, forest economics, silviculture, GIS and remote sensing, urban forestry, wood quality, entomology, biodiversity, forest ecology and conservation, forest harvesting, forest engineering, and bioenergy.

Forestry research at UC is divided into four major clusters:

- sustainable land management
- forest engineering
- managing forest variability
- forestry as a business.

Postgraduate programmes

Qualification	Description	Requires	Start date	Duration
Postgraduate Diploma in Forestry <i>PGDipFor</i>	For those wanting to enhance their undergraduate studies, you will complete 120 points from the Master of Forestry Science, normally including a forest management or a silviculture course.	BForSc or equivalent, or other relevant 3-year bachelor's or higher degree and relevant experience in a forestry-related area.	February or July	Full-time: 1 year Part-time: 2 years
Master of Forestry Science <i>MForSc</i>	This degree will give you a head start into forest management, governance, or research at an advanced level. The degree may be taken by examination and report; by examination and thesis; or by thesis alone. You can complete a professional master's degree with coursework and a report in two years. You can choose from a wide variety of courses, ranging from silviculture to advanced IT applications in forestry.	Four-year BForSc, or other bachelor's degree with appropriate subjects, or a PGDipFor.	February or July; anytime start for thesis-only students	Full-time: 1–3 years
Doctor of Philosophy <i>PhD</i>	The PhD comprises advanced research presented in a thesis. For more details, see page 9 .	Bachelor's degree with first or second-class division 1 honours, or master's degree with first or second class honours, or equivalent.	Beginning of any month	Full-time: 3–4 years Part-time: 4.5–6 years

The Wood Technology Research Centre

The WTRC facilitates information exchange among staff and students engaged in wood-related research. Participants are from the Departments of Chemical and Process Engineering, Forestry, Civil and Natural Resources Engineering, Electrical and Computer Engineering, Mechanical Engineering, Chemistry, and Biological Sciences.

Support network

Forestry postgraduates come from many countries, creating a strong connection among themselves and with the School of Forestry staff. There are regular seminars, potluck lunches, recognition of significant life events, and monthly get-togethers with supervisory staff at the University of Canterbury Club. This creates lifelong networks and friendships for our graduates.

Career opportunities

With forestry being one of Aotearoa New Zealand's biggest exports and a major industry worldwide, UC Forestry graduates are in high demand. Forestry offers rewarding careers in areas such as tree breeding, road engineering, timber harvesting/processing, marketing, planning, policy, biosecurity, biodiversity, conservation, plantation, and sustainable land management.

You will develop a valuable set of transferable skills, including problem-solving, decision-making, project management, teamwork, economic and commercial awareness, and computing skills and geospatial techniques.

canterbury.ac.nz/life/jobs-and-careers

Te Kura Ngahere | School of Forestry

T: +64 3 369 5881



“Studying at the world-leading New Zealand School of Forestry at UC, plus the outdoor activities Christchurch presents, it was a very straightforward decision to choose UC as my destination.”

Vikash

PhD in Forestry Science

Oranga | Health



Te Kaupeka Oranga Faculty of Health offers an interdisciplinary postgraduate education with a range of clinical and non-clinical programmes.

Te Kaupeka Oranga | Faculty of Health fosters collaboration within the University, with other tertiary institutions, and within the health sector.

The Faculty's programmes and research activities respond to the dynamic nature of the health sector and its workforce. We have qualifications for all levels of interest in the health sector — whether you work in a clinical or non-clinical capacity, want to develop your professional practice, or are interested in joining the workforce.

Research

The faculty has a wide range of research interests including population health; health informatics; Māori and Pacific health; the concept of identity among Māori adoptees; the critical developmental period of early childhood; health management; community mental health; palliative care; health and wellbeing of

neurodiverse children; teenage pregnancy and parenthood; school-based Health Education; and access and delivery of care in the community.

Research students share facilities with academics and researchers, fostering collaboration.

The Health Precinct — Manawa

Manawa is a world-class hub for health education, research, and innovation located in the heart of Ōtautahi Christchurch's health precinct. It is a collaborative partnership between UC, Ara Institute of Canterbury, and Te Whatu Ora | Health New Zealand Waitaha to share infrastructure and facilities.

Manawa means heart, patience, or breath in te reo Māori, and was gifted to the partnership as a reflection of the proverb “Manawa whenua, manawa tangata”, which describes the intimate connection between the health of our environment and human health.

We have postgraduate courses in counselling, child and family psychology, health sciences, sport, and nursing.

UC's contribution to the Health Precinct includes postgraduate teaching, research, clinical practice, and professional development across several disciplines with specialist education and training on site.

Career opportunities

The health sector is one of the biggest employers in Aotearoa with a wide range of clinical opportunities. There are also includes many non-clinical roles, which make up about one-third of the total health workforce.

There are health-related career opportunities in local and central government, the voluntary sector, social services, industry, and research.

In an increasingly diverse and ageing society, career opportunities will continue to expand. A health sciences specialisation can lead to work in such areas as health promotion, health and community, behaviour change, health policy, administration, information management, health technology assessment, and research.

canterbury.ac.nz/life/jobs-and-careers

Te Kaupeka Oranga | Faculty of Health

T: +64 3 369 3333

E: studyhealth@canterbury.ac.nz



Subjects

Subjects	PhD	Master's	PG Cert/Dip	Grad Cert/Dip
Child and Family Psychology		•	•	
Counselling		•	•	
Environment and Health		•	•	
Health Behaviour Change		•	•	
Health and Community		•	•	
Health Information Management		•	•	
Health Leadership and Management		•	•	
Health Sciences	•	•	•	
Nursing		•	•	
Palliative Care		•	•	
Sport Coaching				•
Sport Science		•	•	
Taha Hinengaro Health and Wellbeing Practice			•	



“People with completely different culture, language, beliefs, ethnicity, and sexuality come together and study. I loved seeing how students brought different perspectives to the discussion and challenged and expanded my knowledge.”

Momoka

Master of Health Sciences Professional Practice endorsed in Nursing
Registered Nurse, Timaru

Postgraduate certificates and diplomas

Qualification	Description	Requires	Start date	Duration
Graduate Certificate in Sport Coaching <i>GradCertSpC</i>	Develop your professional coaching skills, whether you're a practicing coach or wanting to become one.	A bachelor's degree, or ability to satisfy the Dean of relevant post-secondary study and work experience.	January, February, or July	Full-time: 6 months Part-time: up to 3 years
Postgraduate Certificate in Counselling Studies <i>PGCertCounSt</i>	For those wishing to add counselling skills alongside complementary professional qualifications eg, in education or health.	Any relevant bachelor's degree with a B grade average or better at 300-level.	February	Part-time: up to 2 years
Postgraduate Certificate in Health Sciences <i>PGCertHealSc</i>	Allows anyone interested in the health sector a chance to examine a range of issues in health sciences, and where relevant, to improve their professional practice.	Relevant bachelor's degree, or appropriate health professional qualification.	February or July	Full-time: 6 months Part-time: up to 2 years
Postgraduate Certificate in Palliative Care <i>PGCertPC</i>	You will gain the knowledge needed to provide a holistic approach to the assessment, planning, implementation, and evaluation of the needs of patients and whānau living with a life-limiting condition.	Relevant bachelor's degree or appropriate health professional qualification, as well as relevant professional experience, and access to a relevant clinical placement.	February or July	Part-time: Normally completed over 2 years
Postgraduate Certificate in Sport Science <i>PGCertSS</i>	An ideal qualification for those wanting professional development in sport science knowledge and industry expertise.	Relevant bachelor's degree in sport and/or science with a B average or better.	February or July	Full-time: 6 months
Postgraduate Diploma in Child and Family Psychology <i>PGDipChFamPsys</i>	A professional qualification designed for those who wish to become registered child and family psychologists with the New Zealand Psychologists' Board. Entry is limited to 15 places — applications close on 1 October .	Bachelor's degree in Psychology or equivalent and be enrolled in or completed an approved master's or PhD.	February	Full-time: 3 years Part-time: up to 4 years
Postgraduate Diploma in Health Sciences <i>PGDipHealSc</i>	Aimed at people who are currently employed or seeking employment in a health-related field, social services, or local or central government. You will complete a programme of advanced, specialised study and receive your qualification either unendorsed or endorsed in: <ul style="list-style-type: none"> • Environment and Health • Health and Community • Health Behaviour Change • Health Information Management • Health Leadership and Management • Palliative Care • Taha Hinengaro — Health and Wellbeing Practice 	Relevant bachelor's degree, or appropriate health professional qualification with a B average or better.	February or July	Full-time: 1 years Part-time: up to 4 years
Postgraduate Diploma in Nursing (Registered Nurse Prescriber) <i>PGDipNurs</i>	This is an online programme offered by Tuihono UC UC Online. Take the next step in your nursing career and become a registered nurse prescriber. Enhance the wellbeing of individuals, whānau, and communities.	A current Aotearoa New Zealand registered nurse with at least three years' of clinical experience; and qualifying course completions, or equivalent.	February or July	Full-time: 1 year Part-time: 2 years
Postgraduate Diploma in Sport Science <i>PGDipSS</i>	Develop expertise in the sporting industry and upskill on sporting knowledge for further career opportunities.	Relevant bachelor's degree in sport and/or science with a B average or better.	February or July	Full-time: 1 year

Master's programmes

Qualification	Description	Requires	Start date	Duration
Master of Arts MA or Master of Science MSc	Our Child and Family Psychology programme is unique in Aotearoa New Zealand. It's taught by academic and clinical staff from our School of Health Sciences with other teaching staff.	See pages 15 (MA) and 51 (MSc).	February	See pages 15 (MA) and 51 (MSc)
Master of Advanced Nursing (Nurse Practitioner) MAdvNurs	An online programme offered by Tuihono UC UC Online. Lead healthcare for individuals and communities as a mātanga tapuhi nurse practitioner. Gain the credentials you need to take your career to the next level through our flexible master's degree in advanced nursing.	Must have previous studies in a relevant nursing degree, and practical experience as an Aotearoa New Zealand registered nurse.	February or July	Full-time: 2 years Part-time: 4 years
Master of Counselling MCouns	The only master's counselling degree in Te Waipounamu South Island uses a solution-focused model of counselling. You will learn to identify and use systematic, effective ways to help clients. Entry is limited to 15 places – applications close 1 October . Please ensure you apply several weeks before this date to allow time for processing your application.	Relevant bachelor's degree with a B average or better and with relevant professional experience or suitability to be a counsellor.	February	Full-time: 2–4 years Part-time: up to 6 years
Master of Health Sciences MHealSc	In this degree, you may either follow a general programme, or focus on a specialisation and receive your qualification endorsed in: <ul style="list-style-type: none"> • Environment and Health • Health and Community • Health Behaviour Change • Health Information Management • Health Leadership and Management • Palliative Care Involves a research component	Relevant bachelor's degree or appropriate health professional qualification with B average.	February or July	Full-time: Not less than 2 years Part-time: up to 4 years
Master of Health Sciences Professional Practice MHealScProfPr	In this degree, you may either follow a general programme, or focus on a specialisation and receive your qualification endorsed in: <ul style="list-style-type: none"> • Environment and Health • Health and Community • Health Behaviour Change • Health Information Management • Health Leadership and Management • Palliative Care 	Relevant bachelor's degree or appropriate health professional qualification with B average.	February or July	Full-time: Not less than 2 years Part-time: up to 4 years
Master of Health Sciences (Nursing) MHealSc(Nursing)	A graduate entry pathway to Registered Nurse practice.	Relevant bachelor's degree or appropriate health professional qualification with B average.	February	Full-time: 2 years Part-time: up to 5 years
Master of Sport Science MSS	Gain sport science research insights from experts within and outside of UC in areas such as high performance exercise physiology and biomechanics.	Relevant bachelor's degree in sport and/or science with a B average or better.	February or July	Full-time: 12–18 months

Doctoral programmes

Qualification	Description	Requires	Start date	Duration
Doctor of Health Sciences DHSc	A flexible doctorate designed for health professionals and those working in related fields who want to utilise health data and research to improve the outcomes and experiences of health consumers, whānau, and communities. It consists of a research portfolio and thesis.	Bachelor's degree with first or second-class division 1 honours, or master's degree with first or second-class honours or equivalent.	February	First 2 years part-time as part of a cohort; then completed over 4 years part-time or 2 years full-time.
Doctor of Philosophy PhD	The PhD comprises advanced research presented in a thesis. For more details, see page 9 .	Bachelor's degree with first or second-class division 1 honours, or master's degree with first or second class honours, or equivalent.	Beginning of any month	Full-time: 3–4 years Part-time: 4.5–6 years

Ture me te Muru Taihara Law and Criminal Justice



Founded in 1873, Faculty of Law has a proud history of excellence in teaching, research, and scholarship. We have an international reputation for producing outstanding graduates from a professionally relevant and community-focused law school.

UC Law is ranked in one of the world's top 250 law schools (QS World University Rankings by Subject, 2024).

Leading teachers and researchers

Our teachers are leaders in their fields across areas like International Law, Public Law, European and Comparative Law, as well as the full range of Common Law subjects. They have written many key Aotearoa New Zealand textbooks and for international publishers LexisNexis and Reuters.

Many of our academics are on editorial boards of well-respected international journals including the Journal of Medical Law and the Media and Arts Law Review. UC is also home to the Canterbury Law Review and the New Zealand Yearbook of International Law.

Our strong reputation

UC Law has a particularly strong reputation in the fields of International Law and Governance and offers a master's programme in International Law and Politics.

UC Law also offers research-focused degrees such as the general Master of Laws (LLM). It involves completing research courses and a dissertation, or a by thesis only option (currently the LLM by coursework pathway is not open to new enrolments). There is also a PhD programme.

Research

UC Law has three research clusters — the Centre for Commercial Law, the International and Comparative Law Group, and the Institute of Law, Emergencies and Disasters — all of which welcome postgraduate involvement.

UC Law has strong international links and students are encouraged and supported in developing their international research profile. Postgraduate research students may apply to the staff research fund to finance these activities.

In addition to UC's scholarship opportunities, one university PhD Scholarship is reserved for study in the Faculty of Law. Interested students should contact the Law team before making a formal application.

Library staff offer specialist training in research methods for both Law and Criminal Justice.

Criminal Justice

UC's Master of Criminal Justice (MCJ) offers an advanced working knowledge of the Criminal Justice system. The MCJ is a mix of taught courses, a research dissertation, and project or internship opportunities for first-hand practical experience in criminal justice.

This degree has a strong focus on developing skills sought by the justice sector including bicultural knowledge and competence, critical analysis of current and future policy, and professional understanding and theories behind crime and rehabilitation.

Our Graduate Diploma in Criminal Justice (GradDipCJ) is an opportunity to complement or extend your undergraduate studies with further study in Criminal Justice. You will graduate with a qualification that is vocationally oriented towards industry needs.

Student experience

- You'll be welcomed as an integral part of UC Law and enjoy the collegial atmosphere between students and staff.
- UC Law has lots of student clubs, including the Law Students' Society, which has over 800 members and organises social events throughout the year.
- Te Pūtairiki | Māori Law Students' Association provides a supportive environment for Māori law students.
- Crimsoc is the club for dedicated to all things criminal justice.

Postgraduate programmes

Qualification	Description	Requires	Start date	Duration
Graduate Diploma in Criminal Justice <i>GradDipCJ</i>	Allows you to further your study with a vocationally oriented qualification in Criminal Justice.	Bachelor's degree.	February or July*	Full-time: 1–2 years Part-time: up to 4 years
Master of Criminal Justice <i>MCJ</i>	A qualification for those seeking employment in a range of criminal justice sector occupations and professions, including Police, Corrections, the Ministry of Justice, and in policy development and social service roles.	BCJ with a B+ average, or equivalent.	February	Full-time: 1 year Part-time: up to 3 years
Master of Laws (International Law and Politics) <i>LLM(IntLaw&Pols)</i>	Designed for those who wish to develop specialist knowledge in international law and politics. You will take courses, plus a dissertation. The degree opens up careers in the diplomatic service, specialised legal practice, government, international organisations, non-governmental organisations, and the military.	LLB (or equivalent) with B average.	February or July**	Full-time: 1–2 years Part-time: 2–4 years
Master of Laws LLM	The LLM offers a choice of over 40 topics for specialised research where you can study by thesis alone.	LLB (or equivalent) with B+ average.	February or July**; or anytime start for thesis-only	Full-time: 1–2 years Part-time: 2–4 years
Doctor of Philosophy <i>PhD</i> : • Law • Criminal Justice	The PhD comprises advanced research presented in a thesis. For more details, see page 9 .	Bachelor's degree with first or second-class honours division 1, or master's degree with first or second-class honours division 1, or equivalent.	Beginning of any month	Full-time: 3–4 years Part-time: 4–5–6 years

* July start subject to course availability.

** Although it is possible to start in July, we encourage all students to start in February. This is because there are two compulsory courses for the degree which are offered in the February semester only. It is beneficial for students to have taken these courses before they begin their optional courses.

Career opportunities

Your study can lead to careers in the legal profession, public sector, NGOs, academic teaching and research. Our alumni include leading academics and policy makers in Aotearoa and abroad.

Skills gained in research, statistical analysis, writing and presenting, and bicultural engagement within real-world contexts are solid foundations for a career in Criminal Justice. You will be equipped for roles within Ngā Pirihimana o Aotearoa | Police, Tāhū o te Ture | Ministry of Justice, and Ara Poutama Aotearoa | Department of Corrections.

canterbury.ac.nz/life/jobs-and-careers

Te Kaupeka Ture | Faculty of Law

T: +64 3 369 3888

E: law-enquiries@canterbury.ac.nz



Raana (right)

“Doing a PhD was a great opportunity to broaden my knowledge about the impact of gender on different levels of peoples’ life. I am very passionate to investigate how the lack of gender diversity of the judiciary is addressed, where women could successfully achieve many of the top legal positions.”

Raana

PhD in Law

Puoro | Music



UC's Te Kura Puoro School of Music has a vibrant and welcoming environment to study and perform in.

UC's Music staff are respected nationally and internationally as composers, researchers, recording artists, musicologists, and performers. Performance tutors and lecturers are leading practitioners in their fields.

A key part of UC's Music experience is taking part in concerts and recitals, seminars and workshops, master classes, and demonstrations. Many of our performance postgraduates are also well established in professional careers in Aotearoa and overseas, having won national competitions and awards.

Equipment and facilities

Te Puna Mātauraka o Waitaha | Central Library and Te Kura Puoro | School of Music resource centre contain an extensive collection of scores, books, and recordings, including resources not found anywhere else in the country.

There is specialist software for the transformation and manipulation of sound. Other music facilities include top-quality pianos and string instruments, practice rooms, a chamber organ, and Balinese gamelan.

Music in the city

UC's music students can undertake lessons and performances in the restored Chemistry building in Te Matatiki Toi | Arts Centre situated in central Ōtautahi Christchurch. UC's use of this historic space means more performance opportunities and collaborations, and music students can interact with the city's local and international arts scene.

You have the opportunity to participate in Ōtautahi Christchurch's many amateur and professional groups, whether in opera, theatre, orchestral music, choral, and instrumental. A number of orchestral students perform regularly with the Christchurch Symphony Orchestra.

A vibrant arts scene

With over 200 concerts and theatre performances every year, there will be plenty of opportunities for you to 'experience the Arts' at UC.

Performing arts clubs

Even more opportunities to perform can be found in our many clubs: MUSOC, DramaSoc, TuneSoc, UCanDance, and many more. ucsa.org.nz/clubs

Research

The School's research activities range across musicology, ethnomusicology, composition, and performance. Areas of expertise include performance (voice, piano, organ, and most orchestral instruments), composition, music history and musicology, ethnomusicology, musicianship skills, and conducting.

Career opportunities

Graduates find positions in orchestras, opera houses, conservatories, universities, schools, and other education contexts. They are prominent in areas of musical leadership with community groups such as choirs and orchestras.

Graduates often work in journalism, television, and radio (planning and production), publishing, and in technical areas, including recording.

People with musical talents are in demand in areas of digital software and music technology, and are sought after by various festival organisers and arts organisations.

canterbury.ac.nz/life/jobs-and-careers

Te Kura Puoro | School of Music

E: music@canterbury.ac.nz

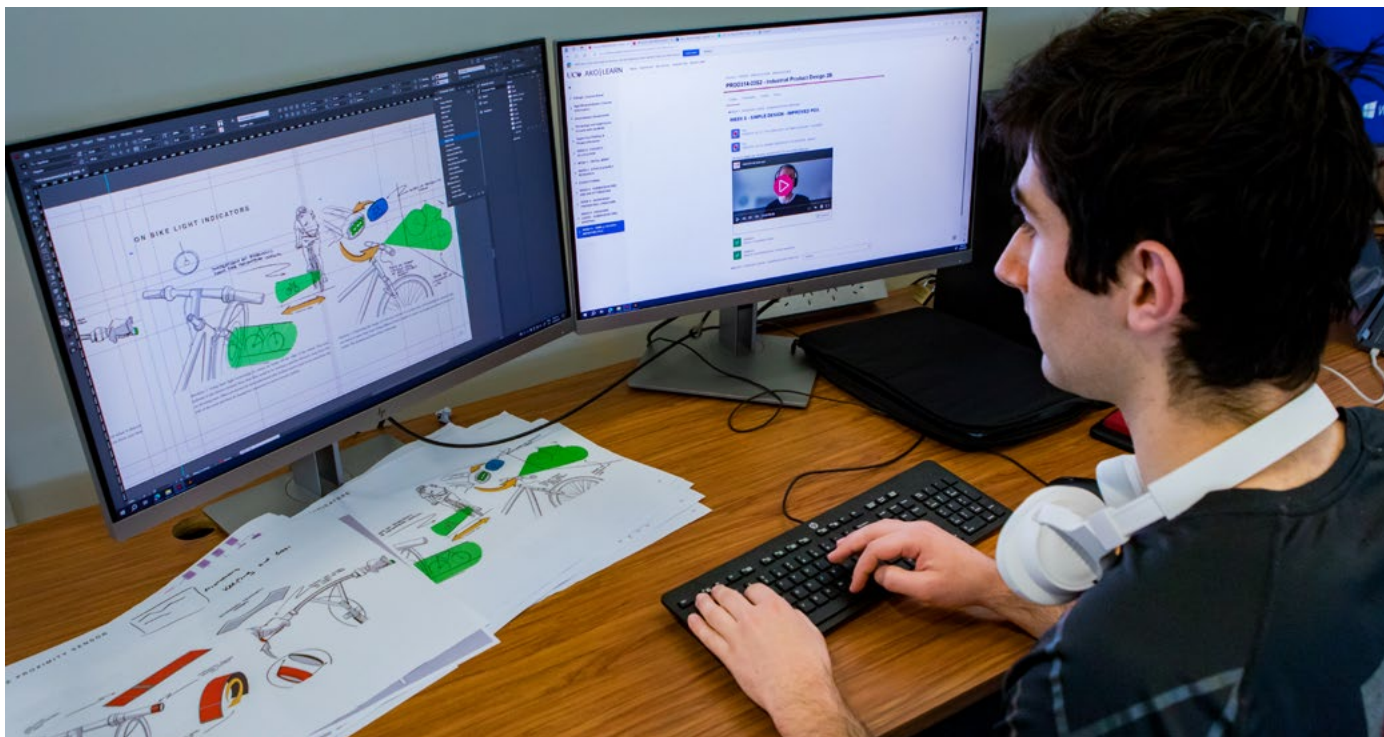


Graduate and postgraduate programmes

Qualification	Description	Requires	Start date	Duration
Bachelor of Arts with Honours majoring in Music <i>BA(Hons)</i>	The BA(Hons) is for high-achieving students. Students can complete their own research as well as taught electives.	BA in Music, or any bachelor's degree plus relevant graduate diploma with grades to a specified level.	February or July*	Full-time: 1 year Part-time: up to 2 years
Bachelor of Music with Honours <i>MusB(Hons)</i>	For graduates of the MusB (or equivalent) with good grades who wish to extend themselves. May be taken in Composition and Performance.	MusB with grades to a specified level; entry into Performance is limited and applications for auditions close on 20 September of the preceding year.	February	Full-time: 1 year
Graduate Diploma in Arts majoring in Music <i>GradDipArts</i>	Study Music in-depth after your bachelor's. Designed for graduates wanting entry to postgraduate qualifications in Music, or to extend or upgrade their existing qualifications.	Any bachelor's degree.	February or July*	Full-time: 1 year Part-time: up to 5 years
Postgraduate Certificate in Arts majoring in Music <i>PGCertArts</i>	Further study in one area of Music specialisation. Can be studied part-time.	BA or a degree in music with grades to a specified level.	February or July*	Full-time: 6 months Part-time: 1 year
Postgraduate Diploma in Arts majoring in Music <i>PGDipArts</i>	Students can choose between a number of course combinations, and it offers a convenient taught pathway to other postgraduate study opportunities.	BA or a degree in music with grades to a specified level.	February or July*	Full-time: 1 year Part-time: up to 2 years
Master of Arts majoring in Music <i>MA</i>	A 180-point degree by coursework and dissertation.	BA in Music, or MusB with grades to a specified level.	February or July	Full-time: 1-2 years Part-time: up to 3 years
Master of Arts (Thesis) majoring in Music <i>MA(Thesis)</i>	The Master of Arts (Thesis) degree consists of a 120-point thesis in a chosen subject.	BA(Hons) in Music or MusB(Hons) with grades to a specified level.	First day of any month	Full-time: 1-2 years Part-time: up to 4 years
Master of Music <i>MMus</i>	Follows the MusB(Hons) and may be taken in Composition or Performance to an advanced technical level.	MusB(Hons) or equivalent, with good grades. Evidence of composition quality is required for Composition students. Entry to the Performance option is limited and applicants must complete an audition subject to approval by the Programme Coordinator. Applicants should contact music@canterbury.ac.nz to arrange an audition.	February or July	Full-time: 1 year Part-time: 2 years
Doctor of Musical Arts <i>DMA</i>	The DMA is aimed at those wishing to undertake advanced research in music composition or performance. It comprises scholarly research (thesis) and performance practice (public music performance or the presentation of compositions).	Bachelor's degree in Music with first or second-class division 1 honours, or master's degree in Music with distinction or merit (or equivalent). An audition interview, and/or portfolio of previous work is also required.	Beginning of any month	Full-time: 3 years Part-time: 4.5-6 years
Doctor of Philosophy <i>PhD</i>	The PhD comprises advanced research presented in a thesis. For more details, see page 9 .	Bachelor's degree with first or second-class division 1 honours, or master's degree with first or second-class division 1 honours, or equivalent.	Beginning of any month	Full-time: 3-4 years Part-time: 6 years

* July start subject to course availability.

Hanga Otinga | Product Design



Te Kura Hanga Otinga School of Product Design qualifications are a blend of engineering, science, design, and entrepreneurship.

Gain product and service design and innovation skills, advanced business knowledge related to product innovation, and strong problem-solving and critical evaluation abilities.

Research

Te Kura Hanga Otinga | School of Product Design's research includes computer vision-based natural feature registration, computer graphics, augmented and virtual reality, artificial intelligence, societal aspects of design, design methods, ethics and morality in design, the pedagogy of design, bio-based and sustainable materials, bio-inspired design and engineering, material perception in the context of product design, and additive manufacturing/3D printing of bio-based materials.

Industry collaboration

Te Kura Hanga Otinga | School of Product Design works closely with industry to ensure that our qualifications are relevant and applicable to current businesses. We also undertake projects and research alongside many of our industry partners.

Design Practice Teaching Fellows

We have the additional benefit of a group of Design Practice Teaching Fellows who work predominantly in industry but also teach within the School, bringing an industry-focused approach to our teaching.

Career opportunities

Our master's programmes are driven by innovation in our modern, dynamic economy. Product Design graduates with business sense as well as technical skills will suit any part of the product creation lifecycle — designing concepts, testing prototypes, pitching to sellers, and marketing to consumers.

Entrepreneurial skills are highly sought after, and with our programmes you will be well prepared to follow your own product, service, or business venture aspirations.

Depending on the focus in your degree, you may suit roles in commercial, educational, IT, consultancy, quality assurance (QA), government, design and advertising sectors, research and development (R&D), product review and critique, and marketing analysis within enterprises needing skilled graduates.

canterbury.ac.nz/life/jobs-and-careers

Te Kura Hanga Otinga School of Product Design

T: +64 3 369 0299

E: productdesign@canterbury.ac.nz



Postgraduate programmes

Qualification	Description	Requires	Start date	Duration
Postgraduate Certificate in Product Design <i>PGCertProdDesign</i>	This Certificate offers both practical and theoretical studies in designing product concepts for home, business, and commercial industry use.	BProdDesign with GPA 5 or above at 300-level; or Conjoint BProdDesign and BCom or BProdDesign and BSc with GPA 5 or above at 300-level; or other appropriate design degree with GPA 5 or above at 300-level.	February or July	Full-time: 18 months Part-time: 2 years
Postgraduate Certificate in Product Innovation <i>PGCertProdInnovation</i>	Open to any student, this Certificate offers advanced practical and theoretical skills in creating products for entertainment, homeware, cosmetics, IT, food, healthcare, and many other industries.	Bachelor's degree with GPA 5 or above.	February or July	Full-time: 18 months Part-time: 2 years
Master of Product Design <i>MProdDesign</i>	This degree uses UC's research expertise in a range of commerce, IT, and engineering fields. You will gain advanced knowledge of product design practice, particularly related to your area of design specialisation. The programme provides a mixture of practical work and theory with original supervised research.	BProdDesign with GPA 5 or above at 300-level; or Conjoint BProdDesign and BCom or BProdDesign and BSc with GPA 5 or above at 300-level; or other appropriate design degree with GPA 5 or above at 300-level.	February or July	Full-time: 18 months Part-time: 3 years
Master of Product Innovation <i>MProdInnovation</i>	Open to students of any study background, this degree is a perfect opportunity to access specialised facilities and industry experts at UC while beginning to develop your own product or business ideas.	Bachelor's degree with GPA 5 or above.	February or July	Full-time: 18 months Part-time: 3 years
Doctor of Philosophy <i>PhD</i>	The PhD comprises advanced research presented in a thesis. For more details, see page 9 .	Bachelor's degree with first or second-class division 1 honours, or master's degree with first or second-class division 1 honours, or equivalent.	Beginning of any month	Full-time: 3–4 years Part-time: 6 years

Pūtaiao | Science



UC scientists are involved in groundbreaking work; they have discovered a new plant species, halved the rate of pneumonia in stroke patients, and helped fight mosquito-borne diseases in Tonga.

UC is ranked in the top 100 universities in the world for Geography, and Linguistics; and in the top 200 for Earth and Marine Sciences (Freshwater, Sustainable Coasts, Water Science and Management), Geophysics (Environmental Hazards and Disasters, Geospatial Data Science), Geology, and Forestry Science.*

The Master of Science in Medical Physics is accredited by The Australasian College of Physical Scientists & Engineers in Medicine.

* QS World University Rankings by Subject, 2024.

Our staff are joined by visiting international academics every year through the Erskine programme. Specialists from all over the world come to UC to teach and collaborate, providing unparalleled access to expertise.

Science facilities at UC are world-class and are enhanced by our Rutherford Regional Science and Innovation Centre (RRSIC), which includes teaching and research laboratories for physics, astronomy, chemistry, geology, geography, and biological sciences.

Research

Sciences at UC are involved in innovative research with an international reputation. Research is as diverse as conservational genetics, developing novel nanomaterials, detecting microplastics in our environment, speech perception technology, understanding the health benefits of micronutrients, as well as identifying air pollution mitigators.

UC's earth scientists are heavily engaged in natural hazard research (earthquakes, volcanic eruptions, landslides), geophysics, climate, and geothermal research.

Working with industry and external organisations internationally, our world-leading projects are funded from both within Aotearoa and internationally.

Study in a unique locations

UC offers research opportunities in the field that no other Aotearoa university can match. Our field stations are unique in Aotearoa; you could study the alpine environment and ecology at Cass in Waitaha Canterbury, or explore the diverse geological landscapes at Kawatiri Westport.

UC is a partner in the Southern African Large Telescope (SALT) project, and operates a field station in Nigeria as part of the Nigerian Montane Forest project.

Best stargazing site on Earth

Astronomy students and staff use the Ōtehiwāi Mount John Observatory near Takapō Tekapo set within the Aoraki-Mackenzie Dark Sky Reserve, one of the biggest dark sky areas in the world. The observatory is home to six telescopes, including Aotearoa New Zealand's biggest telescope, which can observe 50 million stars each clear night. Experts credit it as one of the best stargazing sites on Earth.

Career opportunities

Alongside your subject knowledge, you will develop problem-solving, teamwork, and communication skills. You will use the latest technology during your studies, making you well suited to fields involving scientific discoveries and applied research. Studying Science opens up many career pathways such as in research, business, industry, education, environmental science, health, and government organisations.

Postgraduate study in science is an opportunity to obtain specialist knowledge leading to further advancement. Access to UC's centres of research and innovation, and field stations enable you to conduct inspiring research and get a taste for the sort of employment prospects you can pursue after study.

canterbury.ac.nz/life/jobs-and-careers

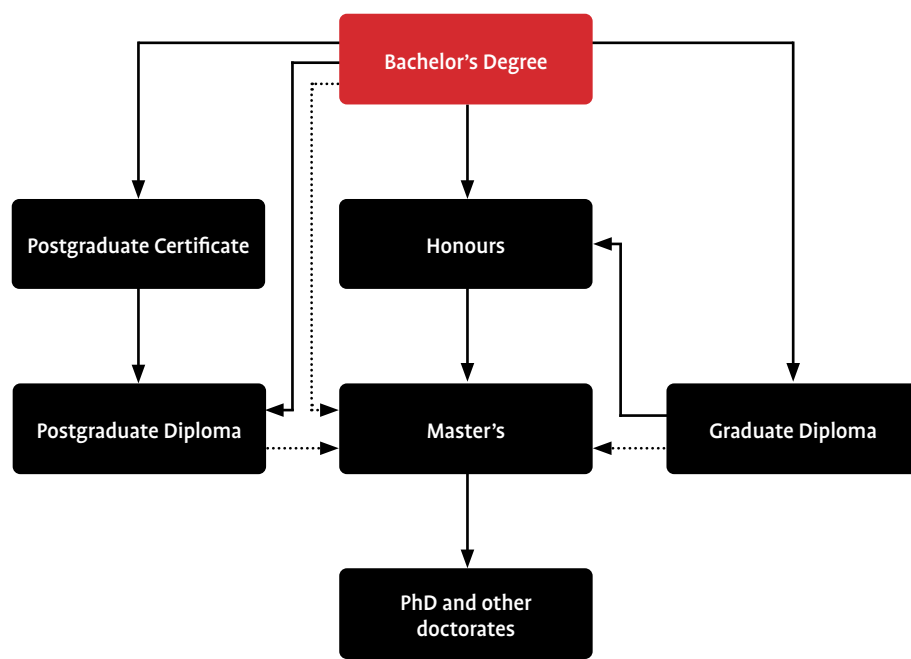
Pūtaiao | Science

T: +64 3 369 4141

E: science@canterbury.ac.nz



Research pathways in the Faculty of Science



.....> Indicates pathways are available in some programmes



“One week you’ll be out in the field looking at critical infrastructure along the West Coast, the next writing an essay on the influence of the neoliberal economic system on disaster risk, and then suddenly you’re scrambling to help coordinate the response to a (simulated) incoming tsunami.”

Michael

Master of Disaster Risk and Resilience

Subject areas

Subject	Honours	Master's	PhD	PG Cert/Dip	Grad Cert/Dip
Antarctic Studies		•	•	•	
Applied Data Science		•		•	
Artificial Intelligence		•		•	
Astronomy	•	•	•	•	•
Audiology		•	•		
Biochemistry	•	•	•	•	•
Biological Sciences	•	•	•	•	•
Biotechnology	•	•	•	•	
Cellular and Molecular Biology	•	•	•	•	
Chemistry	•	•	•	•	•
Child and Family Psychology		•		•	
Clinical Psychology				•	
Computational and Applied Mathematical Sciences	•	•	•	•	
Computer Science	•	•	•	•	•
Data Science	•	•	•	•	•
Disaster Risk and Resilience		•	•		
Ecology	•	•	•	•	
Economics	•	•	•	•	•
Economics and Mathematics (double major)	•				
Environmental Science	•	•	•	•	
Finance		•	•	•	•
Finance and Mathematics	•				
Finance and Statistics (double major)	•				
Financial Engineering	•	•			
Geography	•	•	•	•	•
Geology	•	•	•	•	•
Geospatial Data Science		•		•	
Industrial and Organisational Psychology		•	•	•	
Linguistics			•		•
Mathematics	•	•	•	•	•
Mathematics and Philosophy (double major)	•		•		
Mathematics and Statistics (double major)	•				

Subject areas (continued)

Subject	Honours	Master's	PhD	PG Cert/Dip	Grad Cert/Dip
Mathematical Physics	•		•		
Mathematical Sciences (see page 31)		•			
Medical Physics	•	•	•	•	
Medical Physics (Clinical)		•	•	•	
Medicinal Chemistry					•
Microbiology	•	•	•	•	
Organisational Psychology		•		•	
Philosophy		•	•	•	•
Physics	•	•	•	•	•
Psychology	•	•	•	•	•
Science Education			•		
Spatial Analysis for Public Health		•			
Speech and Language Pathology		•			
Speech and Language Sciences		•	•	•	
Statistics	•	•	•	•	•
Urban Resilience and Renewal		•			
Water Resource Management			•		
Water Science Management		•			

Graduate and postgraduate programmes

NOTE: We offer part-time options for our programmes — please contact the Science Student Advisor (sciencepgadvice@canterbury.ac.nz) who can help plan your study.

Qualification	Description	Requires	Start date	Duration
Graduate Diploma in Science <i>GradDipSc</i>	For graduates seeking to qualify for other postgraduate qualifications in Science, or to extend or upgrade their existing qualification/s. See pages 48–49 for a list of subjects offered.	Any bachelor's degree. Acceptance into majors will depend on the standard and relevance of previous studies.	February or July	Full-time: 1 year
Bachelor of Science with Honours <i>BSc(Hons)</i>	A programme of study that includes a research project undertaken in your major subject. This project can be a helpful introduction to developing research skills for further study.	BSc with a B average at 300-level in relevant subjects.	February or July	Full-time: 1 year
Postgraduate Certificate in Antarctic Studies <i>PGCertAntaStud</i>	Examine major scientific and environmental themes as well as contemporary issues facing Antarctica.	Any bachelor's degree, and a special application.	November	Full-time: 14 weeks

Graduate and postgraduate programmes (continued)

Qualification	Description	Requires	Start date	Duration
Postgraduate Certificate in Geospatial Data Science <i>PGCertGDS</i>	Gain foundational experience and knowledge of geospatial science and technology. Graduates will be prepared for entry-level geospatial roles, and also for further postgraduate study.	Undergraduate degree with a B average minimum or recognised professional discipline-specific experience.	February or July	Full-time: 6 months Part-time: 1 year
Postgraduate Certificate in Science <i>PGCertSc</i>	Build on subjects you took at undergraduate level with this Certificate, or study for professional development, or if you want more in-depth knowledge in a particular area.	Bachelor of Science or equivalent degree, or qualify for entry in your chosen subject of postgraduate study.	February or July	Full-time: 6 months Part-time: 1 year
Postgraduate Diploma in Applied Data Science <i>PGDipADS</i>	Build your data science capabilities and combine these with the skills and knowledge acquired from previous studies.	A degree with a B average in relevant 300-level courses.	February or July	Full-time: 1 year Part-time: 2 years
Postgraduate Diploma in Clinical Psychology <i>PGDipClinPsyc</i>	Professional qualification in Clinical Psychology. A maximum of 16 people are selected each year.	MA, MSc, or PhD in Psychology, or BA(Hons) or BSc(Hons) in Psychology and enrolled in a PhD. Application due 19 September .	February	2 years of coursework and at least 1 year of practical work experience
Postgraduate Diploma in Cognitive Behaviour Therapy <i>PGDipCBT</i>	Cognitive Behaviour Therapy (CBT) is an evidence-based, psychologically informed talking therapy. It has proven effectiveness in treating substance misuse, and common mental health issues including depression and anxiety.	A bachelor's degree in psychology with a B- Grade Point Average. Application due 1 November .	February	Part-time: 3 years
Postgraduate Diploma in Geospatial Data Science <i>PGDipGDS</i>	Gain experience and knowledge of geospatial science and technology. You will be prepared for entry-level geospatial roles and for further postgraduate study.	Undergraduate degree with a B average and/or recognised professional discipline-specific experience.	February	Full-time: 1 year Part-time: 2 years
Postgraduate Diploma in Organisational Psychology <i>PGDipOrgPsyc</i>	Organisational psychologists help create a positive, inclusive, and professional work culture as well as a sustainable work-life balance. This Diploma is a great opportunity for those with non-clinical experience wanting to become registered psychologists.	A 240-point master's or PhD in Organisational Psychology, and proof of paid or unpaid relevant employment to be used towards the internship component of the Diploma.	February	Full-time: 1 year
Postgraduate Diploma in Science <i>PGDipSc</i>	Build on subjects you took at undergraduate level with this Diploma, or study for professional development, or if you want more in-depth knowledge in a particular area. Subject options are on pages 48–49 .	BSc or other bachelor's degree and approved science courses, with at least a B- Grade Point Average in 300-level courses.	February or July	Full-time: 1 year
Master of Antarctic Studies <i>MAntaStud</i>	Combining work with an Antarctic partner organisation, coursework, and an Antarctic-related research dissertation, you will gain a 360-degree view of Antarctic issues. Ideal for careers requiring a solid background in Antarctic science or policy.	PGCertAntaStud and evidence of ability to complete advanced level academic study, with a B Grade Point Average in 300-level courses.	February* or November	Full-time: 1 year

* February for students who have already completed the Postgraduate Certificate in Antarctic Studies.

Graduate and postgraduate programmes (continued)

Qualification	Description	Requires	Start date	Duration
Master of Applied Data Science <i>MADS</i>	Build your data science capabilities and combine these with the skills and knowledge acquired from previous studies.	An undergraduate degree with a B average in relevant 300-level courses.	February or July	Full-time: 1 year (or 20 months for students who don't have a Data Science background)
Master of Artificial Intelligence <i>MAI</i>	Learn and use advanced Artificial Intelligence (AI) theories, software, and tools. You will get to make real-world applications through project work in an area of AI.	A bachelor's degree in a relevant subject with a B Grade Point Average in 300-level Computer Science courses, or recognised professional experience.	February or July	Full-time: 1–1.5 years
Master of Disaster Risk and Resilience <i>MDRR</i>	This is an introduction to a rapidly evolving interdisciplinary field — you will gain an understanding of current disaster risk and resilience research and practice fields; disaster risk drivers, risk communication, and disaster risk reduction strategies; and disaster resilience-building theory and practices.	Any relevant bachelor's degree, normally with a B grade average or higher in the final year of that degree.	February	Full-time: 1 year
Master of Financial Engineering <i>MFEng</i>	This cross-disciplinary degree directly links real-world problems in financial engineering to an underlying theoretical framework. You will become capable of high-level performance in the financial industry.	Any bachelor's degree (including some Statistics, Mathematics, and Finance courses or completion of a qualifying course), normally with a B+ average.	February	Full-time: 1 year
Master of Mathematical Sciences <i>MMathSci</i>	This programme is part of the Engineering qualifications as UC. Please see page 31 for more info, or contact the postgraduate Engineering Student Advisor at engpgdegreeadvice@canterbury.ac.nz .	Bachelor's degree in a relevant subject, and have passed at least 60 points of your 300-level courses with at least a B grade average.	February or July	Full-time: 18 months
Master of Science <i>MSc</i>	The MSc normally consists of coursework and a thesis. Those who have qualified for the equivalent of a BSc(Hons) or PGDipSc with appropriate grades in the subject may be admitted to the MSc by thesis-only in that subject. See our 30+ subject list on pages 48–49 .	BSc or BSc(Hons); or PGDipSc; or any bachelor's degree and a qualifying programme. Child and Family Psychology has other criteria — contact the School of Health Sciences.	February or July	Full-time: 2 years Part II (thesis only): Full-time: 1–2 years

Graduate and postgraduate programmes (continued)

Qualification	Description	Requires	Start date	Duration
Master of Urban Resilience and Renewal <i>MURR</i>	Focus on how communities respond to challenges that cities are facing around the world. You will engage with community groups and local government through coursework and a research project.	Relevant bachelor's degree eg, Geography, Environmental Science, Sociology.	February	Full-time: 1 year
Master of Water Science and Management <i>MWSM</i>	You will gain specialist knowledge, the ability to work in interdisciplinary teams, and experience in community engagement. You will be prepared to work as water scientists and decision-makers in the public and private sectors.	Relevant bachelor's degree.	February	Full-time: 1 year
Professional Master of Computer Science <i>PMCS</i>	Designed to provide advanced subject knowledge in computer science, this applied degree enables upskilling in the theory and application of advanced computer science.	A BSc degree in Computer Science or equivalent, with a B Grade Point Average in 300-level courses or relevant professional work experience.	February	Full-time: 1 year
Professional Master of Geospatial Data Science <i>PMGDS</i>	This will equip current and future geospatial professionals with the advanced skills required for geospatial leadership roles in government, industry, and research.	Relevant undergraduate degree with a B Grade Point Average in 300-level courses, or at least 3 years' professional experience.	February	Full-time: 1 year
Doctor of Philosophy <i>PhD</i>	The PhD comprises advanced research presented in a thesis. For more details, see page 9 .	Bachelor's degree with first or second-class division 1 honours, or master's degree with first or second-class division 1 honours, or equivalent.	Beginning of any month	Full-time: 2–4 years



“It is extremely exciting to know that my research could fill a knowledge gap and perhaps help protect these environments that I love. It is also just generally awesome to be in the mountains doing science in such wild places.”

Alexandra
Master of Science in Ecology

Tauwhiro Hapori | Social Work



UC's Social Work programme is one of the earliest established in Aotearoa and offers internationally-recognised qualifications.

The range and flexibility of study options allow graduates already employed as social workers, or those wishing to gain a first professional Social Work qualification, to undertake further studies. Postgraduates acquire skills which enable them to provide leadership in social work practice, policy development, research, education and training, and management.

Staff remain involved in their particular areas of practice. Postgraduate students benefit from the programme's commitment to interactive teaching styles as well as access to dedicated computer facilities and office space.

Research

The programme has strong links between research, teaching, and practice, and enjoys close relations with social work agencies in the community.

Research focuses on social work issues including interpersonal violence, indigenous cross-cultural theory and practice, policy and practice on ageing, community development, social policy, and clinical social work.

Career opportunities

Social workers are employed in both the public and private sectors, providing direct services to children, families, the aged, people who have committed offences, and people with disabilities, and indirect services in social sector planning, policy development, and research.

Graduates work in a wide variety of jobs, including community development workers, therapists, youth workers, field workers, counsellors, case managers, probation officers, iwi social workers, hospital social workers, service coordinators, policy analysts, and researchers.

Social Work graduates are highly sought after internationally, especially in the United Kingdom and Australia.

canterbury.ac.nz/life/jobs-and-careers

Te Kaupeka Oranga | Faculty of Health

T: +64 3 369 3333

E: studyhealth@canterbury.ac.nz



“My fieldwork educators have been extremely helpful, and my fieldwork placements are giving me a great platform to apply and refine my skills.”

Tom
Master of Social Work (Applied)

Postgraduate programmes

Qualification	Description	Requires	Start date	Duration
Master of Social Work (Applied) MSW(App)	Students can complete a recognised professional qualification over two years leading to registration as a social worker.	Any bachelor's degree with a B average in 300-level courses and courses in social research and human development, or relevant practice experience, or qualifying programme. Limited entry, applications due 30 September .	February	Full-time: 2 years Part-time: up to 6 years
Master of Social Work (by thesis) MSW	This degree is for social work practitioners with specialist practice, supervisory, management, or policy analysis and development responsibilities. The programme of study and research can be designed to meet your professional needs and interests. You must complete a thesis.	BSW with first or second-class division 1 honours; or any bachelor's degree, plus either a Graduate Diploma in Social Work (if conferred before 2009) or Postgraduate Diploma in Social Work with B+ average.	Beginning of any month*	Full-time: 1 year Part-time: up to 3 years
Doctor of Philosophy PhD	The PhD comprises advanced research presented in a thesis. For more details, see page 9 .	Bachelor's degree with first or second-class division 1 honours, or master's degree with first or second-class division 1 honours, or equivalent.	Beginning of any month	Full-time: 3–4 years Part-time: 4.5–6 years

* December and January starts are not recommended.



“I’m really passionate about justice and I love that social work is all about overcoming barriers, fighting injustice, advocating for clients, empowering people.”

Kim
Master of Social Work (Applied)

Hauora Reo | Speech and Hearing



UC's staff are internationally recognised for their research in communication sciences and disorders.

Te Kura Mahi ā-Hirikapo | School of Psychology, Speech and Hearing serves Aotearoa and the world through excellence and innovation in scholarship, teaching, and public service. Students are challenged to excel in professional practice and research related to disorders of hearing, speech, language, and swallowing. Staff provide a national resource centre for information and continuing professional education in the field. Each year a number of distinguished scholars, including Erskine Fellows, come from around the world to lecture and conduct seminars at UC.

The Master of Audiology at UC is accredited by NZ Audiological Society, and the Master of Speech and Language Pathology is accredited by the New Zealand Speech-Language Therapists' Association.

Research

Te Kura Mahi ā-Hirikapo | School of Psychology, Speech and Hearing has three research laboratories: Te Puna Whakaora Rehu Ohotata Rose Centre for Stroke Recovery, UC Speech Labs, and the Child Language Centre. Many of our researchers are also part of the multidisciplinary Te Kāhui Roro Reo | New Zealand Institute of Language, Brain and Behaviour based at UC.

Resources and partnerships

- The School has four on-campus laboratories featuring the latest equipment.
- The School is a partner in the UC-hosted Te Kāhui Roro Reo | New Zealand Institute of Language, Brain and Behaviour.
- Te Puna Whakaora Rehu Ohotata | Rose Centre for Stroke Recovery, and research at St George's Medical Centre, is a UC initiative to link research with the clinical health community.
- Postgraduate students participate in clinics at public hospitals, schools, and centres, providing a multitude of options for working with clients of all ages with speech and hearing disabilities.

Career opportunities

The speech-language therapy profession offers a range of career opportunities. Graduates are highly employable as clinicians in Aotearoa and overseas.

You can work with people in a research laboratory, a private clinic, or a government agency. You can work with children who experience language delays, or with elderly stroke patients in a large hospital or nursing home. You can be an entrepreneur, developing and marketing new communication devices and tests, or build your own private practice. You can teach at a university, or conduct research in a scientific laboratory.

canterbury.ac.nz/life/jobs-and-careers

Te Kura Mahi ā-Hirikapo | School of Psychology, Speech and Hearing

T: +64 3 369 4333

E: psyc-speech-hear@canterbury.ac.nz



Graduate and postgraduate programmes

Qualification	Description	Requires	Start date	Duration
Master of Audiology <i>MAud</i>	Includes coursework, and clinical and research experiences. It involves training professional clinical audiologists with an emphasis on the development of clinical skills relating to the practice of audiology.	BSLP(Hons), BA, BSc; other bachelor's degrees also considered. A special application is required; applications close on 1 October .*	February	Full-time: 2 years Part-time: up to 4 years
Master of Science majoring in Speech and Language Sciences <i>MSC</i>	Includes independent research presented in a thesis, which is completed concurrently with one advanced course in either clinical management or research design. A non-clinical, research-only pathway is available to students with a 4-year undergraduate degree in a related discipline. This prepares graduates for clinical supervision and/or research, entry to a doctorate programme, or to assume leadership roles.	BSLP(Hons) or other qualifying programme. Liaise with department postgraduate coordinators to find out more about GPA requirements. Applications close on 1 November .	February	Full-time: 1–2 years
Master of Speech and Language Pathology <i>MSLP</i>	This professional qualification is accredited by the New Zealand Speech-Language Therapists' Association. It includes clinical experience with clients of all ages. Study areas include swallowing, fluency and voice, clinical linguistics, and speech and language development and disorders.	Any bachelor's or master's degree (although not suitable for those graduates with a degree specialising in speech and language therapy/pathology). A special application is required; applications close on 1 October .*	February	Full-time: 1–2 years Part-time: up to 4 years
Doctor of Philosophy majoring in Audiology or Speech and Language Sciences <i>PhD</i>	The PhD comprises advanced research presented in a thesis. See page 9 for more information on PhDs.	Bachelor's degree with first-class or second-class division 1 honours or master's degree with first or second-class division 1 honours, or equivalent.	Beginning of any month	Full-time: 3–4 years Part-time: 5–6 years

* **NOTE:** Applications close 1 October, but those received before 1 August may be considered for early admission. Final application results may not be available until November. If you are also applying for admission to the University, please ensure you apply several weeks before this date to allow time for your application to be processed.



“The degree itself is challenging but what you will gain is very rewarding. I learned a lot from distinguished professors and experienced clinical educators. The learning environment is open and relaxing which helps student maximise their abilities.”

Nguyen

Master of Speech and Language Pathology

Tuihono UC | UC Online



Tuihono UC | UC Online offers university programmes, courses, and micro-credentials, specifically designed for online learning.

Grow your career

Whether you're looking to gain professional accreditation, steer your career in a new direction, or upskill, Tuihono UC | UC Online has a range of online study options that allow you to balance work and life.

Learn when it suits you, with most of our courses running over 9 weeks. You can often start learning in February, April, July, or September.

Choose from short professional development courses, micro learning, to full degree programmes developed by industry experts.

Accessible, flexible, and supportive

All our courses are designed for learning online and delivered using the latest technology. With a focus on adaptability and accessibility, we make it easy to extend your learning and expand your professional skills.

Tuihono UC | UC Online has a strong focus on tiakitanga, pastoral care and support of our learners. Our team supports our students to complete their study and to help them feel connected in an online learning world.

Wide range of subjects from Applied Data Science to Nursing

We have subjects ranging from criminal justice, instructional design, nursing, strategic leadership, applied data science, and wellbeing. We are also starting online postgraduate programmes for in-demand areas such as cyber security and digital marketing.

Courses include:

Professional development courses

- Academic Writing Basics
- Law and Disaster Risk Reduction
- Ngā Herenga
- Professional Project Management

Micro-credentials

- Data Ethics
- GIS for Mapping
- Learning Design series (3 courses)
- Lifestyle and Wellbeing

- Mentoring Teachers
- Nutrition and Wellbeing
- Psychology of Wellbeing

For the most up-to-date list of online courses, visit www.uonline.ac.nz

Bootcamps on Data Science & AI, Cyber Security, or Software Engineering

Tuihono UC | UC Online are excited to partner with the Institute of Data to offer 12-week and 24-week bootcamps. Study Data Science & AI, Cyber Security, or Software Engineering through practical immersive training by industry experts in real-time. Upskill online through the Institute of Data's remote learning format. Bootcamp graduates stand out in the job market and are ready to excel in lucrative tech industry careers.

Contact Institute of Data directly to find out more via <https://bootcamp.uonline.ac.nz>

Tuihono UC | UC Online

E: info@uonline.ac.nz



Postgraduate programmes

Please check the Tuihono UC | UC Online website (www.uonline.ac.nz) for the most up-to-date requirements for the qualifications below.

Qualification	Description	Requires	Start date	Duration
Postgraduate Certificate in Counselling Studies <i>PGCertCounSt</i>	Develop your counselling knowledge and skills to work more effectively with clients, students, or colleagues. Learn from anywhere in Aotearoa New Zealand, combined with study days onsite in Christchurch.	Bachelor's degree with a grade average of B or higher in 300-level courses.	February or July	Part-time: 1 year
Postgraduate Certificate in Cyber Security <i>PGCertCySec</i> (subject to CUAP and TEC approval)	Advance your career and become a cyber security expert through flexible study. Learn how to effectively test for and mitigate cyber threats.	Background in computer science, computer engineering, software engineering or a similar field	February or July	Full-time: 6 months Part-time: 1 year
Postgraduate Certificate in Digital Marketing <i>PGCertDigiMktg</i> (subject to CUAP and TEC approval)	Gain the skills and competencies to challenge existing commercial practice, and participate in the development of new and innovative marketing strategies.	Any bachelor's degree with a B average or above in the 300-level courses or at least 5 years of practical, professional, or scholarly experience in a relevant field.	February (start date subject to change)	Up to 24 months
Postgraduate Certificate in Strategic Leadership <i>PGCertStratLdrship</i>	Whether you are new to a leadership role, or needing to deepen your leadership capabilities, this study will prepare you to lead better in the fast-paced and dynamic business world.	At least 5 years of practical, professional, or scholarly work experience of an appropriate kind.	February or July	Part-time: 1.5 years
Postgraduate Diploma in Applied Data Science <i>PGDipADS</i>	Gain a broad and practical understanding of the principles and applications of data science.	Bachelor's degree in related area, eg. computer science, mathematics, statistics with a grade average of B or higher in 300-level courses.	February or July	Full-time: 1 year Part-time: 2 years
Postgraduate Diploma in Nursing (Registered Nurse Prescriber) <i>PGDipNurs</i>	Take the next step in your nursing career and become a registered nurse prescriber through flexible postgraduate nursing study. Enhance the wellbeing of individuals, whānau, and communities.	A current Aotearoa New Zealand registered nurse with at least 3 years of clinical experience; and qualifying course completions, or equivalent.	February or July	Part-time: 2 years
Master of Advanced Nursing (Nurse Practitioner) <i>MAdvNurs</i>	Provide healthcare for individuals and communities as a mātanga tapuhi nurse practitioner. Gain the credentials you need for your career through our flexible master's degree in advanced nursing.	Must have previous studies in a relevant nursing degree, and practical experience as an Aotearoa New Zealand registered nurse.	February or July	Part-time: 4 years
Master of Applied Data Science <i>MADS</i>	Learn how to identify and describe data trends using statistics and specialised software to help achieve success and enhance productivity. Includes a research project.	Bachelor's degree in related area, eg. computer science, mathematics, statistics with a grade average of B or higher in 300-level courses.	February or July	Full-time: 1.5 years Part-time: 3 years
Master of Engineering Management <i>MEM</i>	Gain the specialised management knowledge you need for your engineering career. Learn how to integrate engineering and business knowledge for success in leadership roles across the engineering sector.	Bachelor of Engineering or Science with Honours degree with GPA 4 average or equivalent degree with relevant experience in field.	February or July	Part-time: 3-4 years
Master of Organisational Psychology <i>MOrgPsys</i>	Achieve mastery in organisational psychology and drive positive change in your workplace. From designing job structures to selecting top talent, this programme covers many essential skills for today's leaders.	Bachelor's degree with major or minor in Psychology with B grade average or bachelor's degree or equivalent with at least 5 years experience in relevant field.	February or July	Full-time: 1.5 years Part-time: 3-5 years
Master of Health Sciences (Nursing) <i>MHealSc(Nursing)</i>	Want to make a difference in your community and be part of the medical profession? Study nursing through our master's degree and become a registered nurse in 2 years.	Bachelor's degree in a health-related discipline or the Postgraduate Diploma in Health Sciences or appropriate health professional qualification.	February	Full-time: 2 years

Lifestyle and support



Accommodation

All our accommodation options offer a safe and supportive living/learning environment on campus.

Apartment-style living

You will have your own fully furnished room and share kitchen/living, bathroom, and laundry facilities with other students of similar age and level of study.

There are four options for postgraduate students:

Campus Houses

There are 24 houses located on the perimeter of the campus for students. The houses are fully-furnished with two-five single and queen rooms. Shared housing for couples and a two-bedroom house for a small family is an option. Lawns and gardens are maintained by UC staff.

Hayashi

Hayashi offers a quieter living environment. Each two-storey townhouse has a mixture of single and double rooms with a limited number of ensuite rooms and self-contained studio units for couples. Hayashi, located on the Dovedale campus, is a 15-minute walk to main campus facilities.

Ilam Student Accommodation

With students of all ages, all levels of study, and from all over the world, Ilam offers a large diverse community and is just 5 minutes' walk to the Ilam campus. There are three apartment types — Mānuka, Kōwhai, and Hīnau.

Sonoda Christchurch Campus

Located adjacent to Hayashi, Sonoda offers 108 single rooms in five-bedroom apartments. The hall is surrounded by Japanese-inspired landscaped grounds providing a peaceful environment to live and study.

Students with accessibility needs

UC is committed to assisting students with accessibility needs. If you have a specific requirement, please advise us in your application so we can ensure that your needs are met.

Couples and Families

If you are travelling with your partner and/or family please check with Accommodation Services as accommodation on campus is very limited. It is likely that you will be required to source a room or property off campus.

Postgraduate Flexi Start

If you are arriving outside standard semester dates (January–June or July–December), you can apply for a postgraduate flexi start. This enables you to indicate your arrival date so the hall can adjust your start date to align with your arrival date.

How to apply

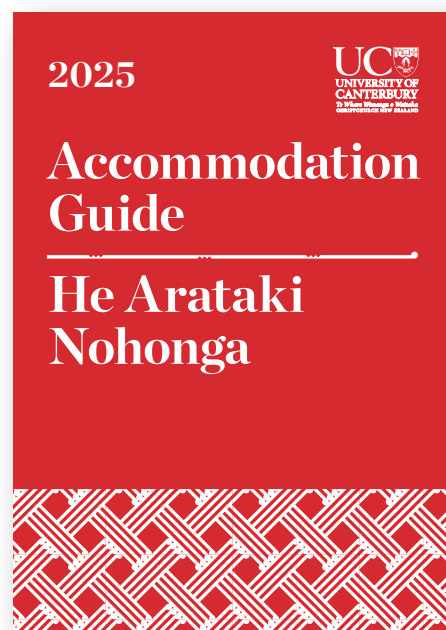
An online application form is required, selecting either the 2025 Academic Year, 2025 Semester 1 only, or 2025 Postgraduate Flexi Start. Academic Year applications are prioritised over Semester 1.

Couples and families can apply for 2025 Couples/Family Accommodation.

Halls of residence are affiliated to UC through a contract and pastoral care collaboration. Your contract is directly with the hall of residence with standards and expectations as set out in the Village Rules. www.unilodge.com.au/student-accommodation-christchurch/sonoda/faq

Homestay

Homestay is living with a local family in their home with your own fully furnished room and meals. UC has contracts with two homestay providers who manage the application and placement process. Rates range from \$290 per week.



Private renting

Rent can range from \$460 per week for a two-bedroom house to \$1,265 per week for a five plus-bedroom house.*

Set up costs for an empty property include:

- 1–4 week's rent as bond.
- 1–2 week's rent in advance.
- Power and internet.
- Furniture and/or whiteware (if unfurnished).
- Contents/liability insurance.

Temporary accommodation is required on arrival as you must not sign for a room or property without viewing it personally.

For information on starting a tenancy, market rent, and rights and responsibilities, refer to www.tenancy.govt.nz

* Source: Tenancy Services.



Take a look inside



View our rooms, facilities, and 360 degree panoramas online

Te Ratonga Nohonga
Accommodation Services

T: +64 3 369 3569

E: accommodation@canterbury.ac.nz



Support

Te Pokapū Pūkenga Ako Academic Skills Centre (ASC)

Whether you are worried about returning to study after time off or just want to take your writing and presenting to the next level, ASC provides a range of free support services to help you thrive academically. You can book personalised appointments, and we have workshops in a range of areas including:

- adults returning to study
- postgraduate academic skills
- essay writing
- giving an oral presentation
- time management.

Te Ratonga Whaikaha | Student Accessibility Service

If you have a disability or a long-term medical condition, any permanent or temporary impairment, or any condition that may affect your study, get in touch with the Student Accessibility Service to discuss support.

sas@canterbury.ac.nz

Atawhai Ākonga | Student Care

Need to talk? Feeling like you are overwhelmed or struggling? Student Care can support you with a wide range of issues throughout your time at UC. This could include personal, social, family, mental health and wellbeing issues; work/study balance; financial issues, or something else.

Our professionally trained and friendly Wellbeing Advisors will meet with you to understand your needs, discuss your situation, and help you to work through your options. They can provide you strategies, advice, and information. Please book a free, confidential appointment online or drop in to see us.

International Student Support

International Student Advisors are available to support you with a range of wellbeing, cultural, family, or other support issues you may have.

Please book a free, confidential appointment so that we can understand your needs.

Find your community

At UC we are proud of our rich diversity of communities. Whether you identify as Ākonga Māori, Pacific, Rainbow, Disabled, International, we have spaces just for you.

canterbury.ac.nz/communities



We have trained student advisors who can support you throughout your time here, whether that's with tutoring, wellbeing, social support, hardship funding, or any other help you need.

Support for Rainbow Students

Our rainbow team offers support and advice for all Rainbow ākonga. UC has many Rainbow Clubs on campus including QCanterbury and faculty-specific clubs (e.g. Queer in Law and Rainbow Engineering). We also have a rainbow room on campus for students to use as a study, meeting or social space, and events such as Rainbow Cafe.

Akiaki Ākonga Student Experience

The UC Mentoring programme can link you with a student mentor who will provide friendly support, and help you adjust to campus life.

UniLife

UniLife is a free, year-long social mentoring programme, run by students for students who are new to UC, live off-campus, or are international students. We are here to help you find your feet at UC, meet other students, make friends, and explore together what UC and Christchurch/Canterbury has to offer.

We have a specific team in UniLife for postgraduate students, whether domestic or international, of any age or career level.

Te Rōpū Ākonga | UCSA

Te Rōpū Ākonga o Te Whare Wānanga o Waitaha University of Canterbury Students' Association (UCSA) is a not-for-profit organisation dedicated to helping students succeed and belong at UC.

Services include advocacy and welfare, a subsidised dental scheme, early learning centres, club support, events, media, and even food outlets on campus.

UCSA has over 160 student-run clubs in everything from anime and baking to tramping and underwater hockey. Whatever you are interested in, you can find a community of like-minded people at UC.

UC Postgraduate Student's Association (PGSA)

PGSA is the only UCSA-affiliated club run 'by postgrads for postgrads'. PGSA supports Te Kura Tāura | UC Graduate School's academic and professional development seminars and lectures.

Social events run by UC PGSA include meet-ups, quiz nights, trips away, and an annual postgraduate ball.

Health services

At UC Health Centre, we offer a full range of GP (General Practitioner) services and counselling support to look after your physical and mental health. In many cases, this is free or heavily subsidised for our students.

Membership at UC's Rec & Sport is free for all students — you can play social sport, gym, or just drop-in and shoot some hoops to unwind. Both UC and the UCSA run early learning centres to support students with families.

To read more about all the support services, go to UC's wellbeing page:



Apply and enrol



Enrolment and scholarships

Apply and enrol

Apply online at myUC (myuc.canterbury.ac.nz). Create an account, register your details, and follow the online prompts. Courses can be added from 1 October to complete your application. You are recommended to submit your application for Semester 1 study by **8 December 2024**. Some qualifications have an earlier closing date and additional application requirements — check if your intended qualification is included in the list on [page 64](#).

A step-by-step guide on how to apply is available online at canterbury.ac.nz/study/getting-started/admission-and-enrolment.

Thesis students are enrolled on an annual basis.

Doctoral applications (PhD, EdD, DMA, DHSc)

Doctoral applicants must arrange supervision before applying. Details on how to apply are available online at:



Completing your enrolment

Domestic students

Domestic students include:

- citizens of Aotearoa New Zealand (includes Cook Islands, Niue, and Tokelau citizens)
- citizens of Australia residing in Aotearoa while studying
- Australia and New Zealand residence class visa holders residing in Aotearoa while studying.

Identity documents may be required to match you to the National Student Index.

When your admission is confirmed and your application (with courses) is approved, you will receive an Enrolment Agreement to review. Log in to myUC (www.myuc.canterbury.ac.nz) to accept/decline the agreement and nominate your payment method. Fees must be paid in full before the start of semester to complete your enrolment.

International students

You are an international student if you are a citizen or a residence class visa holder of a country other than New Zealand or Australia.

If your application is successful, you will receive a Conditional or Unconditional Offer of Place.

All conditions must be met before an Unconditional Offer of Place letter is granted.

An Unconditional Offer of Place is required to apply for a Student Visa, together with evidence of prepaid tuition fees. A pro forma invoice is included in an Unconditional Offer of Place.

New international students complete their enrolment in person. Once you've shown your current passport and valid student visa, an Enrolment Agreement is generated for you to review and accept. Any differences in fees must be paid before your enrolment is finalised and study can commence.



Study costs

Find out how much you are likely to pay for your study at UC, what funding options are available, and how to pay your fees by scanning the QR code below.



More information

T: +64 3 369 3999 or 0800 VARSITY (827 748)
T: +64 3 364 3443 (outside NZ)
E: info@canterbury.ac.nz

Scholarships

At UC, we have many scholarships funded by multiple sources such as central funds, UC Trusts, UC Foundation, and many generous organisations and individuals.

Start looking early for funding as it may take time to find out if your application has been successful. You should also ask your student advisor for scholarship opportunities in your subject area. For research students, your supervisor may also know of funding in your area.

International students are eligible for many of our scholarships, but often fees are covered at the domestic New Zealand rate. Similarly, part-time study may also be supported by a scholarship, usually at a pro rata basis where this is permitted. Please check the conditions for each scholarship carefully.

Preparing your application

Scholarship applications open approximately eight weeks before their advertised closing dates. To apply:

- review the eligibility criteria (subject/course, level, citizenship, school, region) and required supporting documentation
- complete the appropriate online form
- apply for as many scholarships as you are eligible. You can often hold more than one award at a time.

Other scholarships

- Te Pūkai Tara | Universities New Zealand administers a number of scholarships. www.universitiesnz.ac.nz
- New Zealand Scholarships assist students from developing countries. www.nzscholarships.govt.nz
- Education New Zealand provide research scholarships. <https://enz.govt.nz/funding>
- Industry sponsored awards — contact the relevant Faculty or the Scholarships Office

UC scholarships and awards

- Doctoral level — approximately 150 awards are available:



- Other postgraduate — approximately 60 awards are available:



UC Scholarships Office

T: +64 369 4900
E: scholarships@canterbury.ac.nz



Important dates

2024

Oketopa | October

- 1 Enrolment applications for 2025 open
- 15 Some UC Master's and Doctoral Scholarship applications due

Noema | November

- 11 2024/25 Summer Programme starts

Tihema | December

- 13 Enrolment applications close for international students and new domestic students with an intended S1 start date

2025

Hānuere | January

- 10 Enrolment applications close for continuing domestic students with an intended S1 start date

Pēpuere | February

- 17 Semester 1 lectures start, and last day to enrol for Semester 1 courses

Āperira | April

- 7–25 Semester 1 break

Mei | May

- 1 Applications for accommodation due for a July 2025 start
- 1 Enrolment applications close for international students with an intended S2 start
- 15 Some UC Master's and Doctoral Scholarship applications due
- 30 Semester 1 lectures end

Hune | June

- 9–21 Mid-year examinations and tests

Hūrae | July

- 7 Enrolment applications close for new and continuing domestic students with an intended S2 start
- 14 Semester 2 lectures start, and last day to enrol for Semester 2 courses

Ākuhata | August

- 25–7 September: Semester 2 break

Oketopa | October

- 17 Semester 2 lectures end
- 28–8 November: End of year examinations

Noema | November

- 10 2025/26 Summer Programme starts

Application dates for postgraduate qualifications requiring a special application

Applications due	Qualification	Applications due	Qualification
19 September	Master of Antarctic Studies	30 November	Master of Māori and Indigenous Leadership
	Postgraduate Certificate in Antarctic Studies		Postgraduate Certificate in Māori and Indigenous Leadership
20 September	Postgraduate Diploma in Clinical Psychology		Master of Science — Industrial and Organisational Psychology
30 September	Master of Social Work (Applied)		Postgraduate Diploma in Cognitive Behaviour Therapy
1 October	Master of Audiology (Year 1)	1 December	Postgraduate Diploma in Teaching and Learning (domestic students)
	Master of Speech and Language Pathology		Master of Teaching and Learning (domestic students)
	Postgraduate Diploma in Child and Family Psychology		Master of Business Administration (international students)
	Master of Counselling		Postgraduate Diploma in Business Administration (international students)
31 October	Postgraduate Diploma in Teaching and Learning (international students)	31 January	Master of Business Administration (domestic students)
	Master of Teaching and Learning (international students)		Postgraduate Diploma in Business Administration (domestic students)
	Postgraduate Diploma in Fine Arts		
	Master of Fine Arts		

Some programmes may require an early Application to Enrol in addition to the special application. Other programmes not listed in this table may require a special application. Scan the QR code below for detailed application requirements for your intended programme of study.



Your notes

UC Contact Centre

NZ Freephone: 0800 VARSITY (0800 827 748)

T: +64 3 369 3999

E: info@canterbury.ac.nz

University of Canterbury
Te Whare Wānanga o Waitaha
Private Bag 4800
Christchurch 8140
New Zealand

www.canterbury.ac.nz



Proud supporters of:



**UNIVERSITY OF
CANTERBURY
YOUNG NEW
ZEALANDER OF
THE YEAR**

WORD
CHRISTCHURCH
FESTIVAL

Tell us what you think of this publication at
publications@canterbury.ac.nz